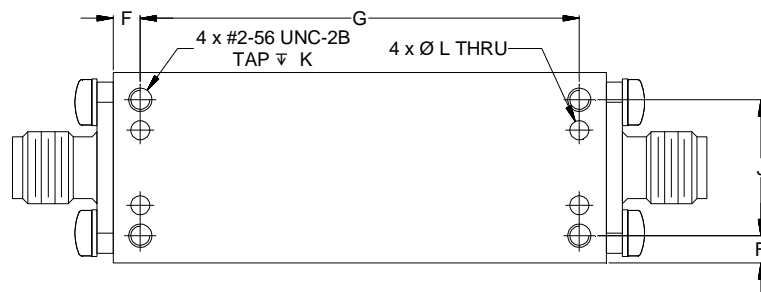
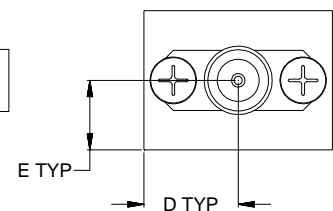
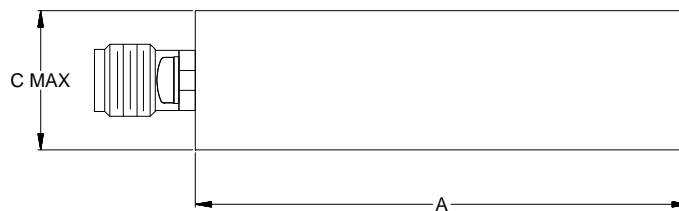
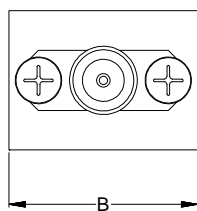
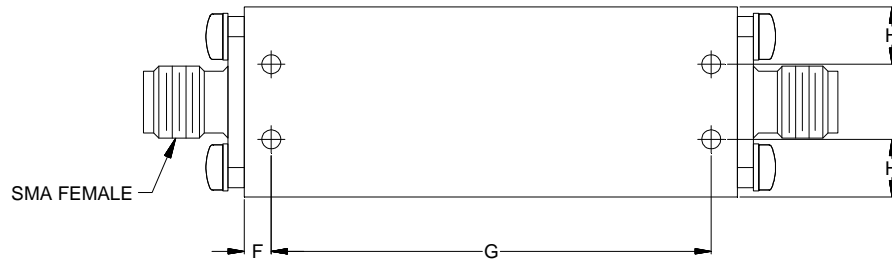


Outline Dimensions

RD2472



CASE#	A	B	C	D	E	F	G
RD2472	1.83` (46.40)	.70 (17.75)	.53 (13.50)	.35 (8.88)	.26 (6.50)	.10 (2.54)	1.630 (41.40)

CASE#	H	J	K	L	WT. GRAMS
RD2472	.21 (5.38)	.500 (12.70)	.100 (2.54)	.078 (2.00)	36

Dimensions are in inches (mm). Tolerances: 2 Pl. $\pm .100$; 3 Pl. $\pm .015$

Notes:

1. Case material: Brass & Aluminum alloy.
2. Case finish: Powder coated.
3. Refer to the individual model data sheet for the type of connectors available.



P.O. Box 350166, Brooklyn, New York 11235-0003 (718) 934-4500 Fax (718) 332-4661 For detailed performance specs & shopping online see Mini-Circuits web site



Provides ACTUAL Data Instantly From MINI-CIRCUITS At: www.minicircuits.com

RF/IF MICROWAVE COMPONENTS