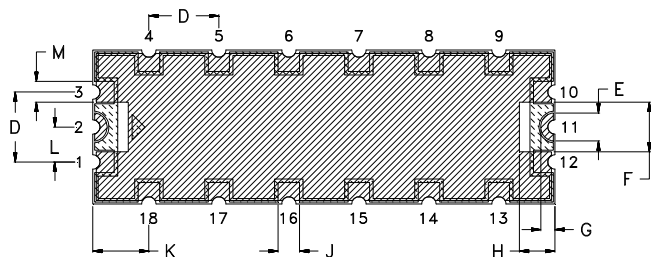
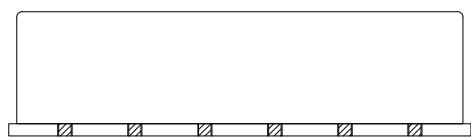
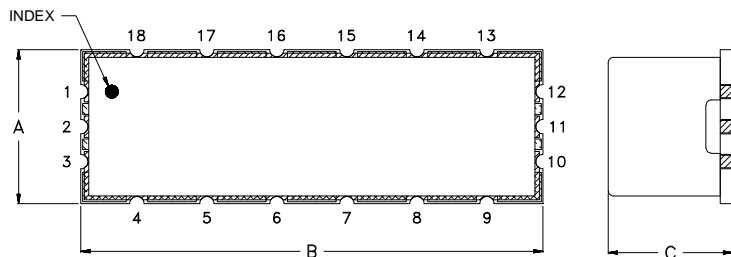


# Case Style

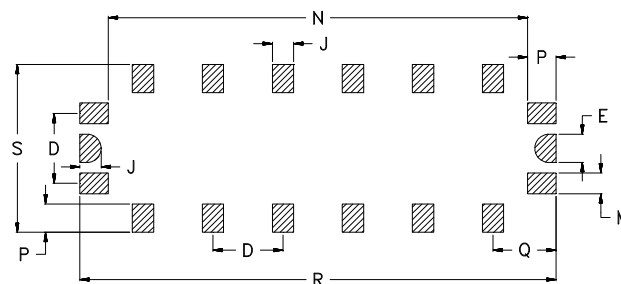
# TV



## TV2849

### Outline Dimensions



SUGGESTED LAYOUT FOR P.C.PATTERN



 METALLIZATION  
 SOLDER RESIST

CASE#	A	B	C	D	E	F	G	H	J	K	L	M
TV2849	.433 (11.00)	1.299 (33.00)	.350 (8.89)	.197 (5.00)	.079 (2.02)	.140 (3.56)	.040 (1.02)	.100 (2.54)	.060 (1.52)	.157 (4.00)	.098 (2.50)	.058 (1.48)

CASE#	N	P	Q	R	S	WT. GRAMS
TV2849	1.179 (29.95)	.080 (2.03)	.177 (4.51)	1.339 (34.02)	.473 (12.02)	4

Dimensions are in inches (mm). Tolerances: 2 Pl.  $\pm$  --; 3 Pl.  $\pm$  .030

#### Notes:

- Case material: Nickel-Silver alloy.
- Base: Printed wiring laminate.
- Termination finish:
  - For RoHS Case Styles: 3-5  $\mu$  inch Gold over 120-240  $\mu$  inch Nickel plate.
  - For RoHS-5 Case Styles: Tin-Lead plate.



ISO 9001 ISO 14001 CERTIFIED



P.O. Box 350166, Brooklyn, New York 11235-0003 (718) 934-4500 Fax (718) 332-4661 For detailed performance specs & shopping online see Mini-Circuits web site



The Design Engineers Search Engine Provides ACTUAL Data Instantly From MINI-CIRCUITS At: [www.minicircuits.com](http://www.minicircuits.com)

RF/IF MICROWAVE COMPONENTS