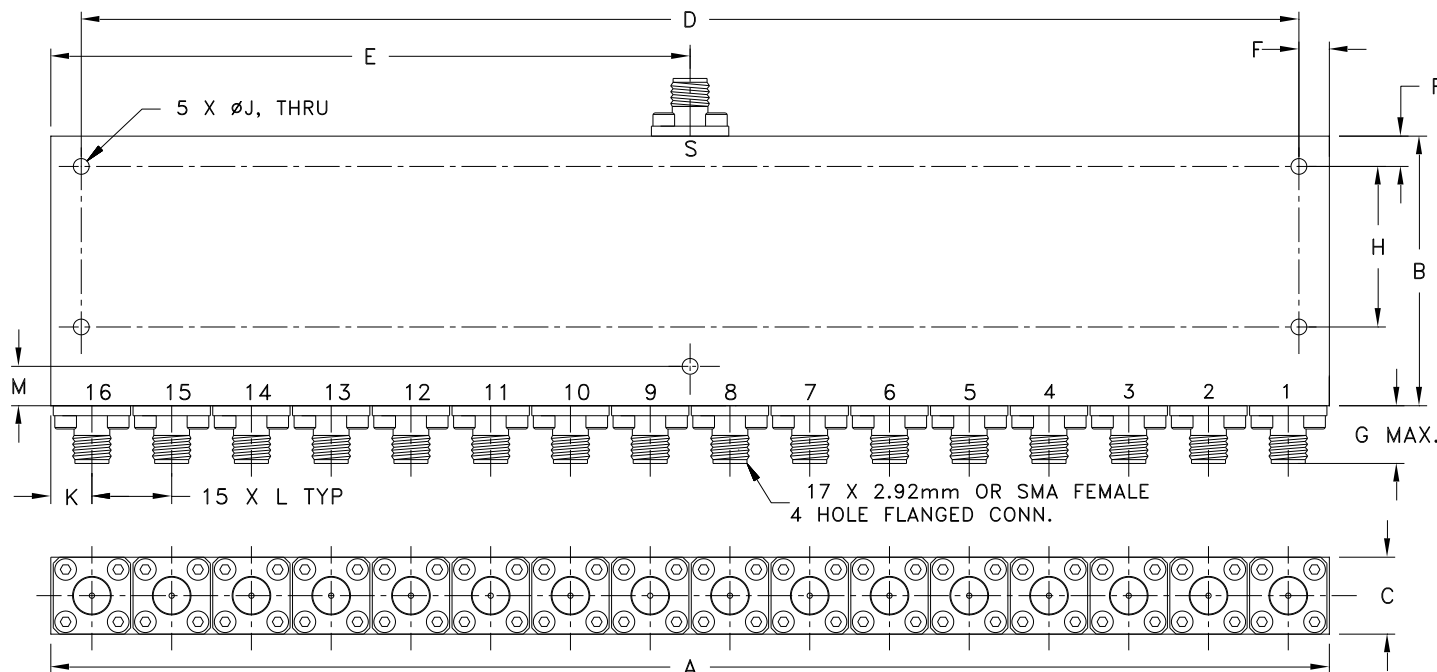


Case Style

UU

Outline Dimensions

UU640-1



CASE#	A	B	C	D	E	F	G	H	J	K	L	M
UU640-1	8.27 (210.00)	1.75 (44.50)	.50 (12.70)	7.874 (200.00)	4.13 (105.00)	.197 (5.00)	.43 (11.0)	1.043 (26.50)	.10 (2.60)	.27 (6.75)	.52 (13.10)	.256 (6.50)

CASE#	WT. GRAMS
UU640-1	430

Dimensions are in inches (mm). Tolerances: 2 Pl. \pm .03; 3 Pl. \pm .015

Notes:

- Case material: Aluminum alloy.
- Case finish:
For RoHS Case Styles: Clear chemical conversion coating, non-chrome or trivalent chrome based.
- Refer to the individual model data sheet for the type of connectors available.

Mini-Circuits®
ISO 9001 ISO 14001 CERTIFIED

ALL NEW
minicircuits.com

P.O. Box 350166, Brooklyn, New York 11235-0003 (718) 934-4500 Fax (718) 332-4661 For detailed performance specs & shopping online see Mini-Circuits web site



The Design Engineers Search Engine Provides ACTUAL Data Instantly From MINI-CIRCUITS At: www.minicircuits.com

RF/IF MICROWAVE COMPONENTS