

Outline Dimensions

VL3239

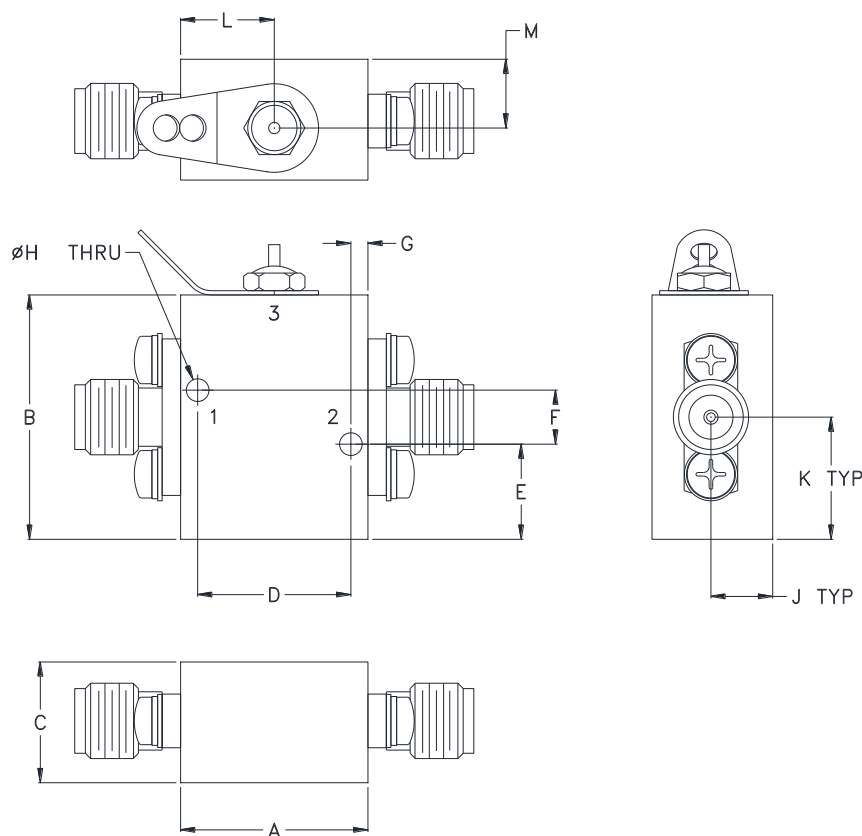


Figure 1

CASE#	A	B	C	D	E	F	G
VL3239	.66 (16.7)	.86 (21.8)	.43 (10.8)	.540 (13.72)	.34 (8.5)	.190 (4.83)	.06 (1.5)

CASE#	H	J	K	L	M	WT.GRAMS
VL3239	.070 (1.78)	.22 (5.5)	.43 (10.9)	0.33 (8.3)	0.24 (6.1)	36

Dimensions are in inches (mm). Tolerances: 2 Pl. $\pm .050$; 3 Pl. $\pm .015$

Notes:

1. Case material: Brass alloy.
2. Case Finish:
 - a. Case & Cover of the units –Gold plating.
3. Refer to the individual model data sheet for the type of connectors available.



P.O. Box 350166, Brooklyn, New York 11235-0003 (718) 934-4500 Fax (718) 332-4661 For detailed performance specs & shopping online see Mini-Circuits web site



Provides ACTUAL Data Instantly From MINI-CIRCUITS At: www.minicircuits.com

RF/IF MICROWAVE COMPONENTS