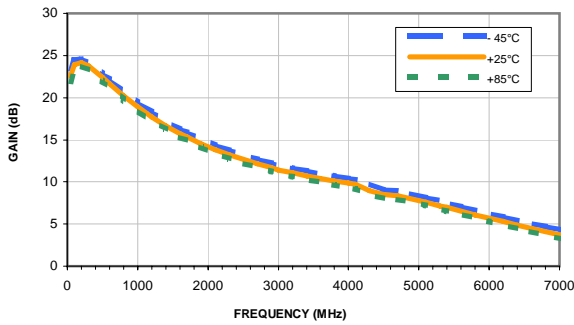
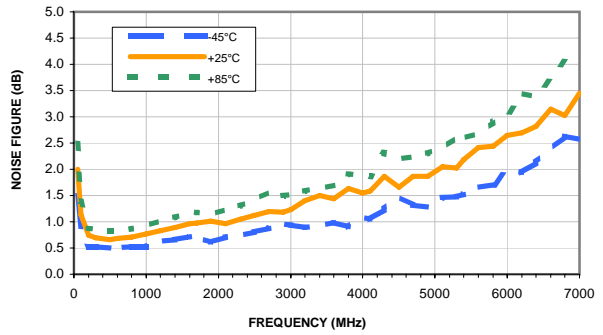


## Typical Performance Curves

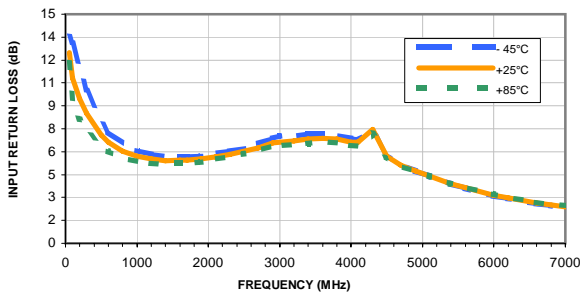
**GAIN vs. FREQUENCY & TEMPERATURE**  
Vd = 3V, Rbias=1.5K Ohms



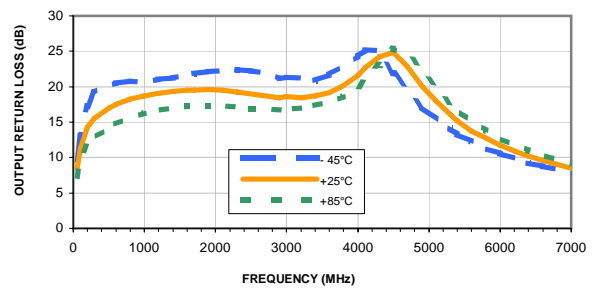
**NOISE FIGURE vs. FREQUENCY & TEMPERATURE**  
Vd = 3V, Rbias=1.5K Ohms



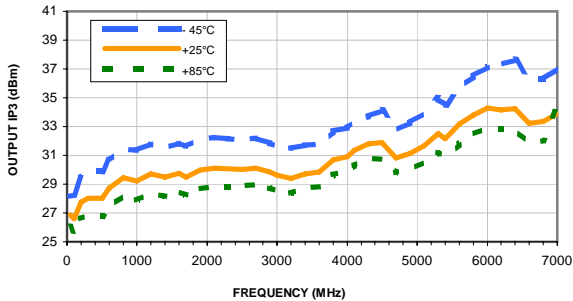
**INPUT RETURN LOSS vs. FREQUENCY & TEMPERATURE**  
Vd = 3V, Rbias=1.5K Ohms



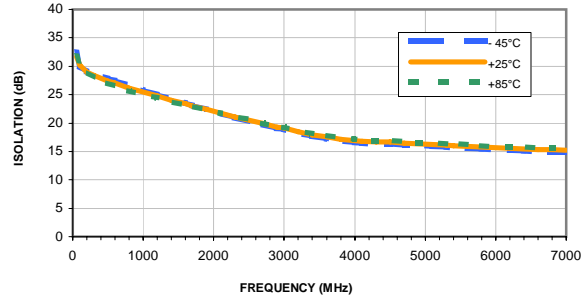
**OUTPUT RETURN LOSS vs. FREQUENCY & TEMPERATURE**  
Vd = 3V, Rbias=1.5K Ohms



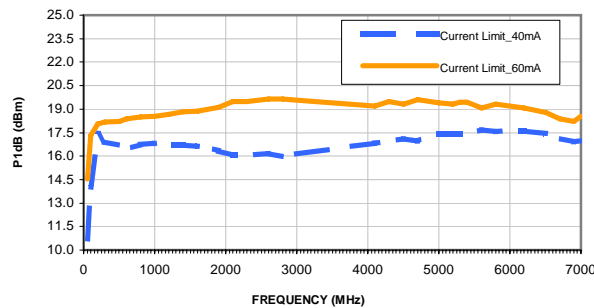
**OUTPUT IP3 vs. FREQUENCY & TEMPERATURE**  
Vd = 3V, Rbias=1.5K Ohms



**ISOLATION vs. FREQUENCY & TEMPERATURE**  
Vd = 3V, Rbias=1.5K Ohms



**P1dB vs. FREQUENCY & CURRENT LIMIT (1)**  
Vd = 3V, Rbias=1.5K Ohms



(1) Current is externally limited during P1dB measurements. Unit is capable of higher output power if current is not limited.