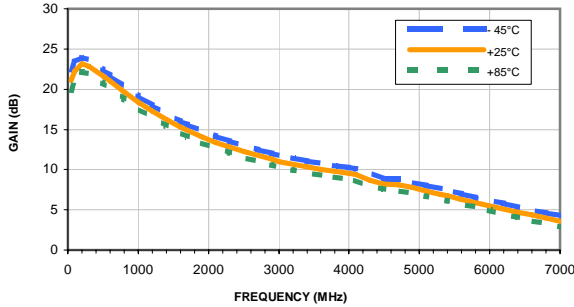
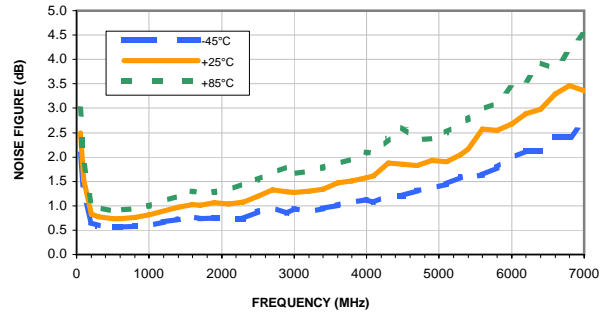


Typical Performance Curves

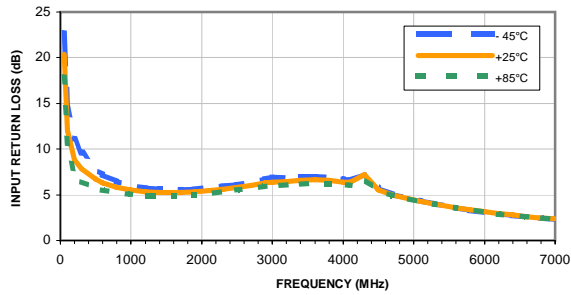
GAIN vs. FREQUENCY & TEMPERATURE
Vd = 5V, Rbias=7.5K ohms



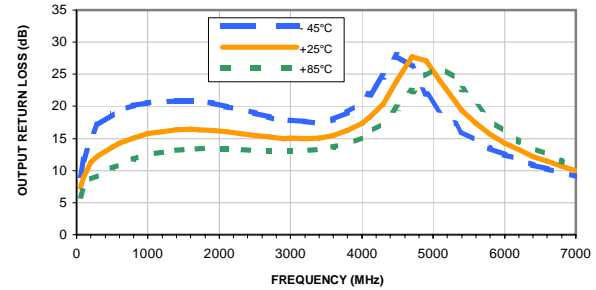
NOISE FIGURE vs. FREQUENCY & TEMPERATURE
Vd = 5V, Rbias=7.5K ohms



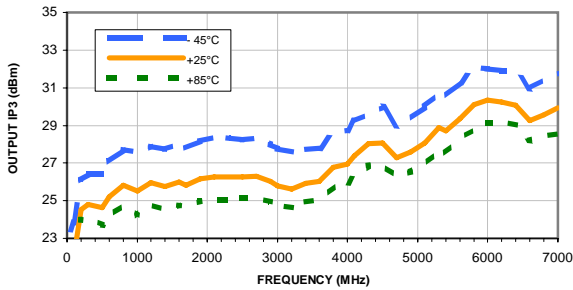
INPUT RETURN LOSS vs. FREQUENCY & TEMPERATURE
Vd = 5V, Rbias=7.5K ohms



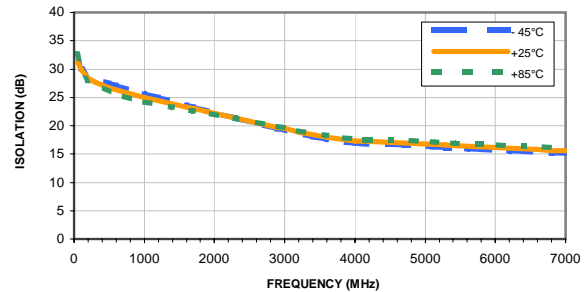
OUTPUT RETURN LOSS vs. FREQUENCY & TEMPERATURE
Vd = 5V, Rbias=7.5K ohms



OUTPUT IP3 vs. FREQUENCY & TEMPERATURE
Vd = 5V, Rbias=7.5K ohms

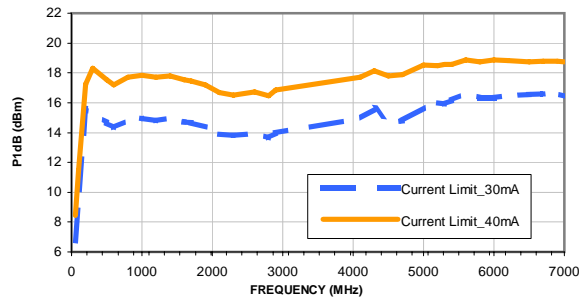


ISOLATION vs. FREQUENCY & TEMPERATURE
Vd = 5V, Rbias=7.5K ohms



P1dB vs. FREQUENCY & CURRENT LIMIT (1)

Vd = 5V, Rbias=7.5K ohms



(1) Current is externally limited during P1dB measurements. Unit is capable of higher output power if current is not limited.