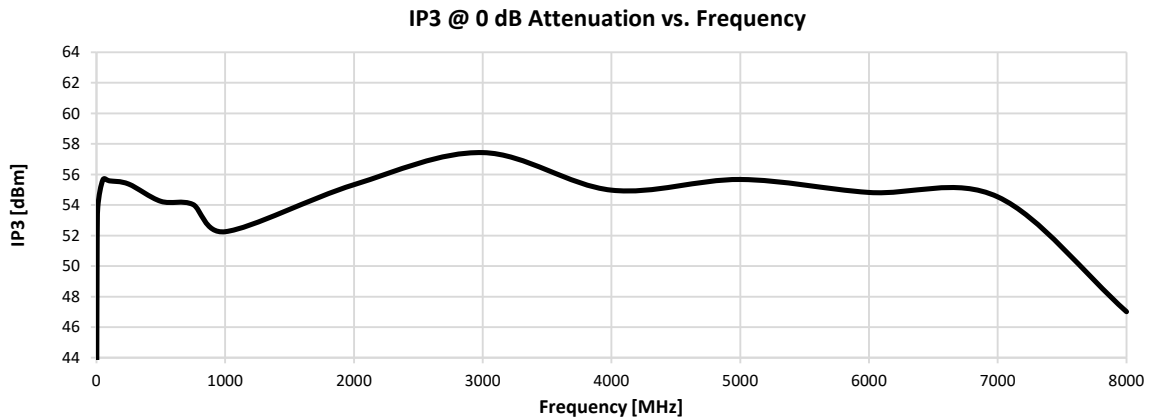
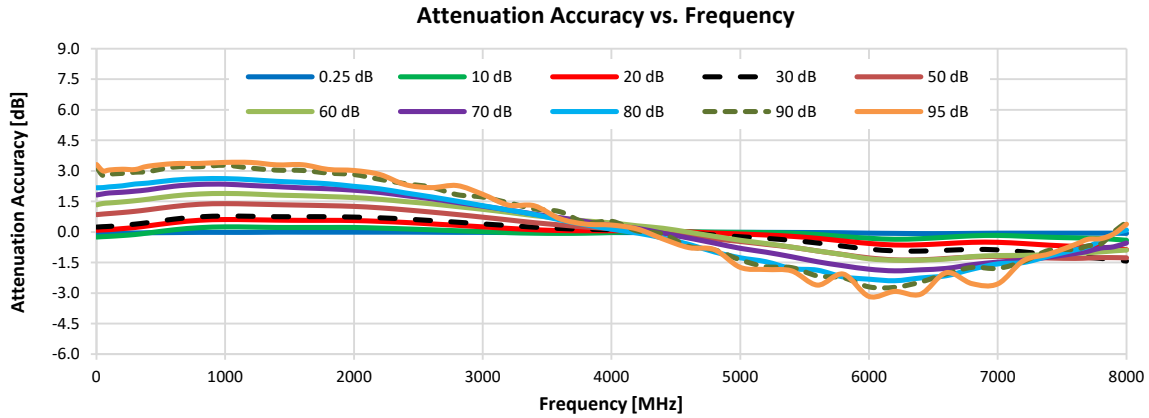


Programmable Attenuator

RC8DAT-8G-95PE

Typical Performance Graphs

Test Conditions: @ Temperature = 0°C.

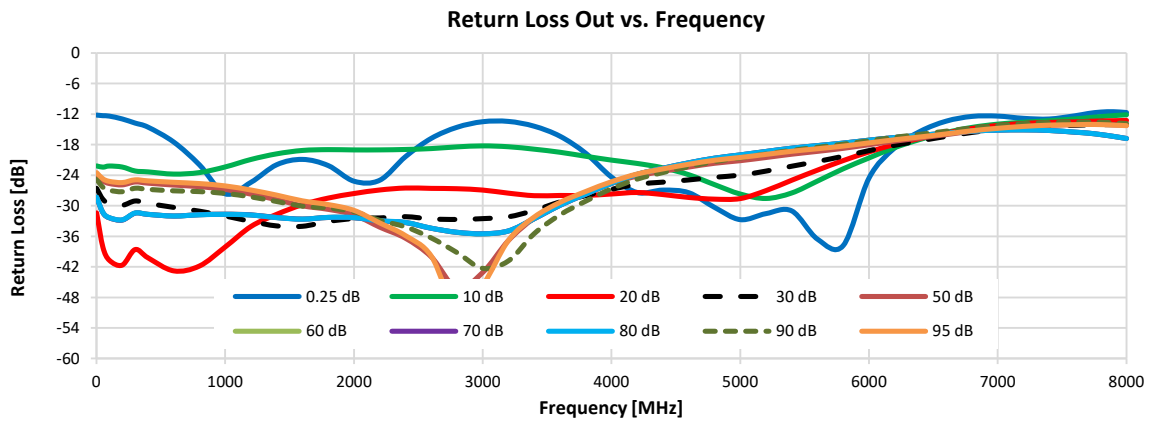
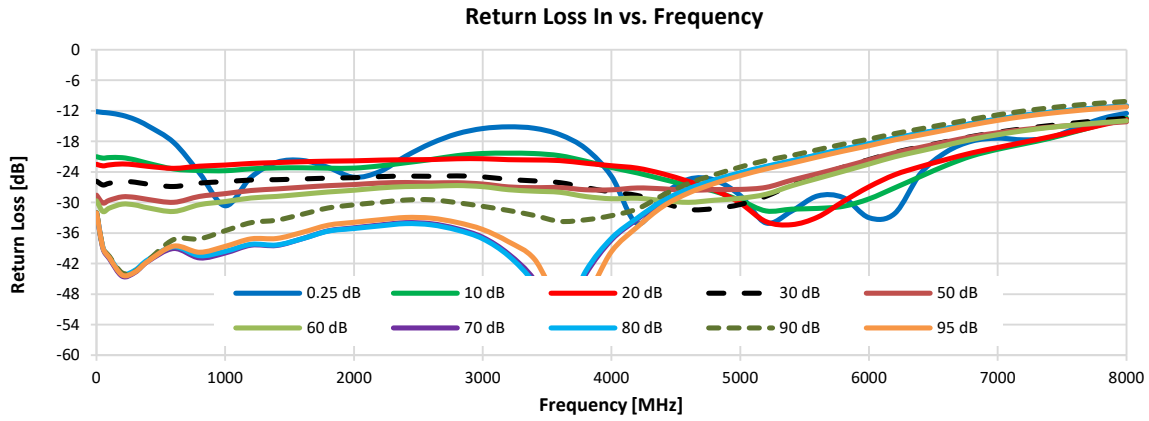


Programmable Attenuator

RC8DAT-8G-95PE

Typical Performance Graphs

Test Conditions: @ Temperature = 0°C.

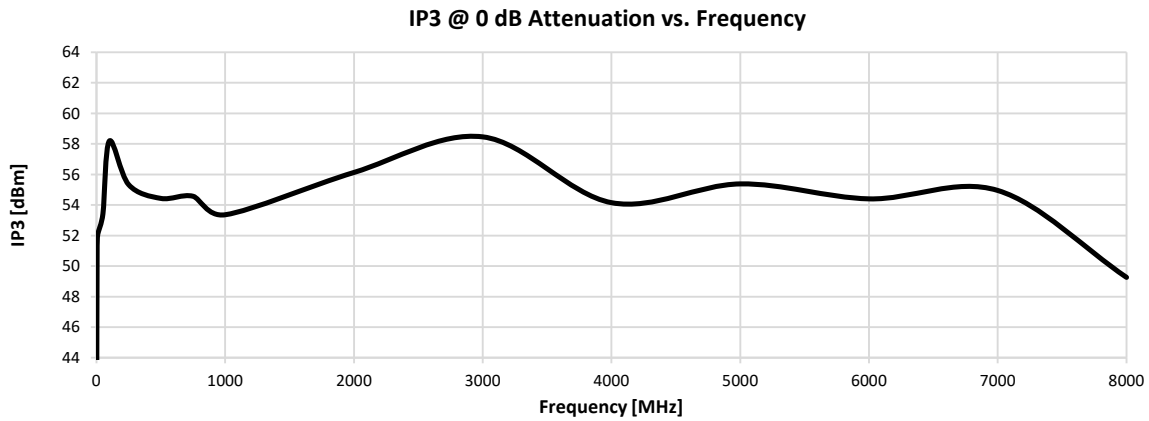
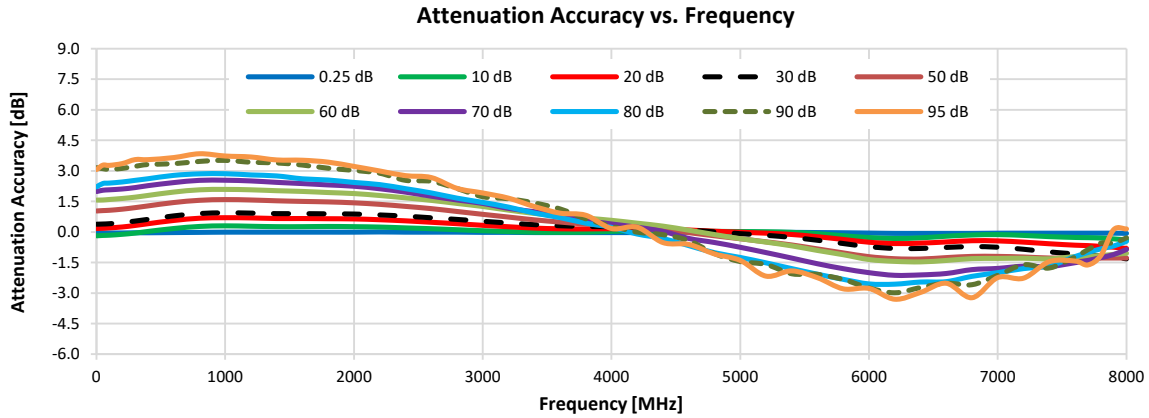


Programmable Attenuator

RC8DAT-8G-95PE

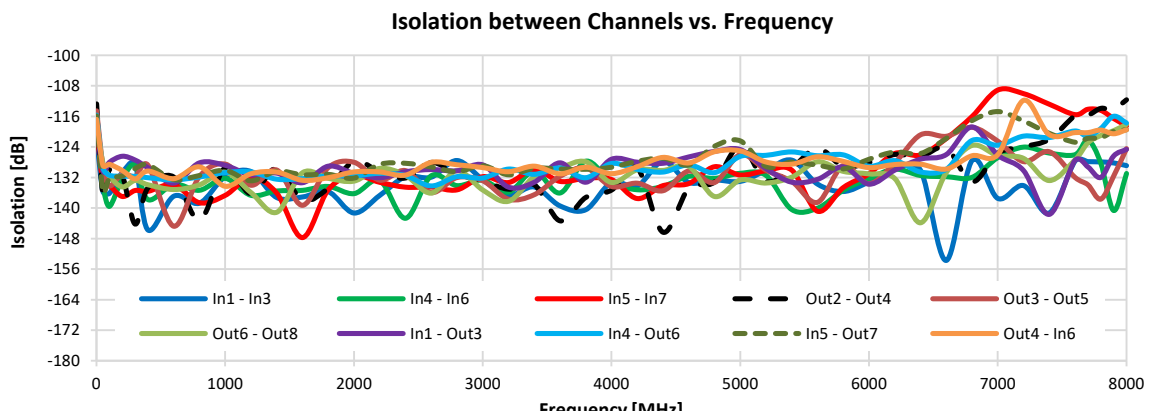
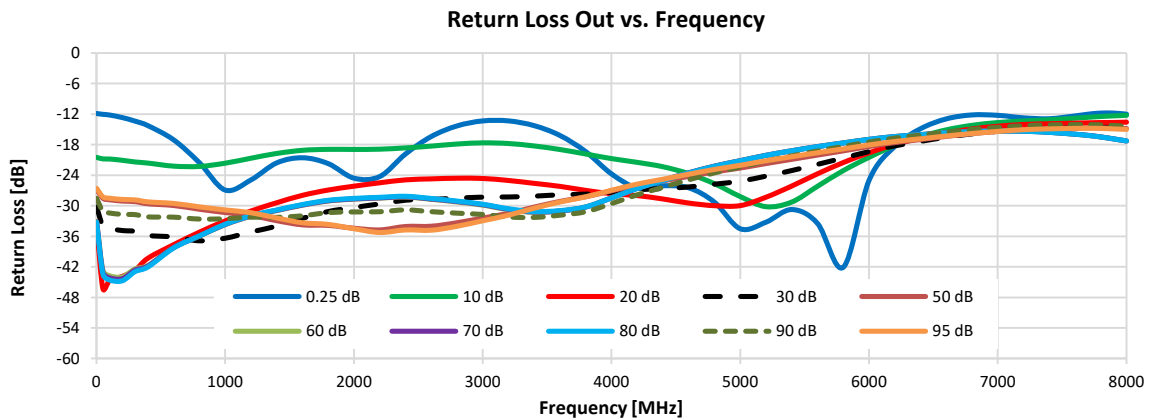
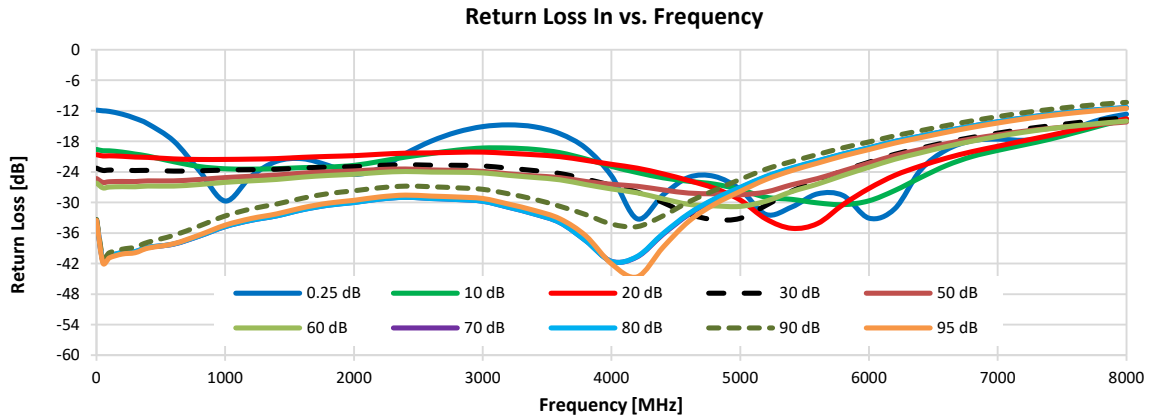
Typical Performance Graphs

Test Conditions: @ Temperature = +25°C.



Typical Performance Graphs

Test Conditions: @ Temperature = +25°C.

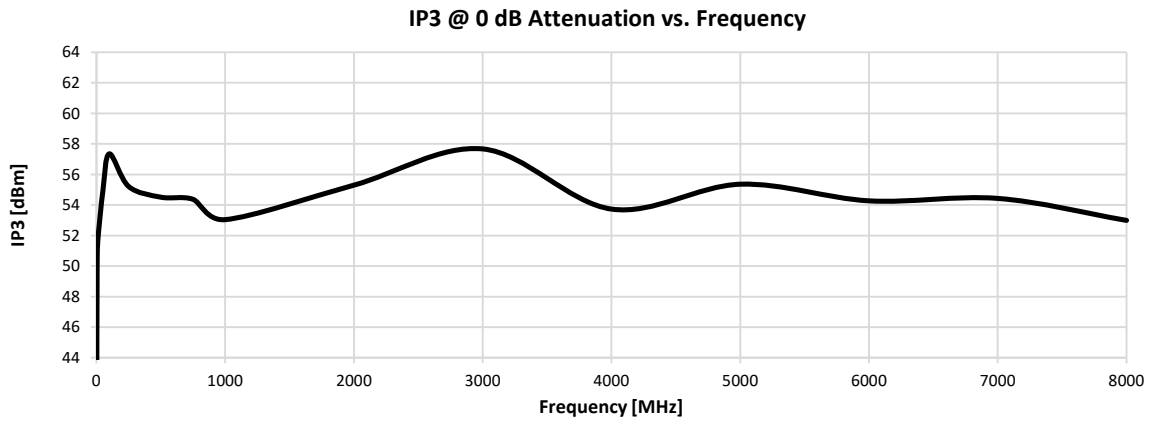
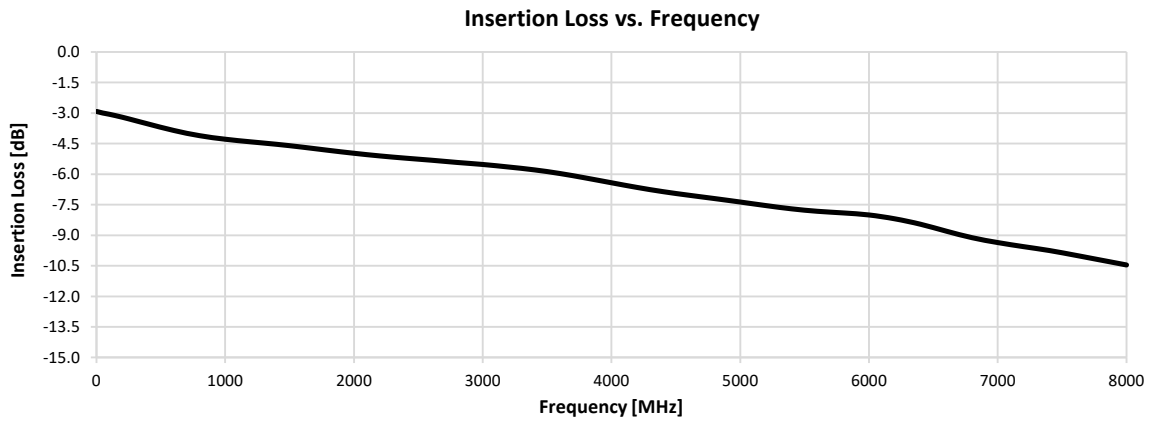
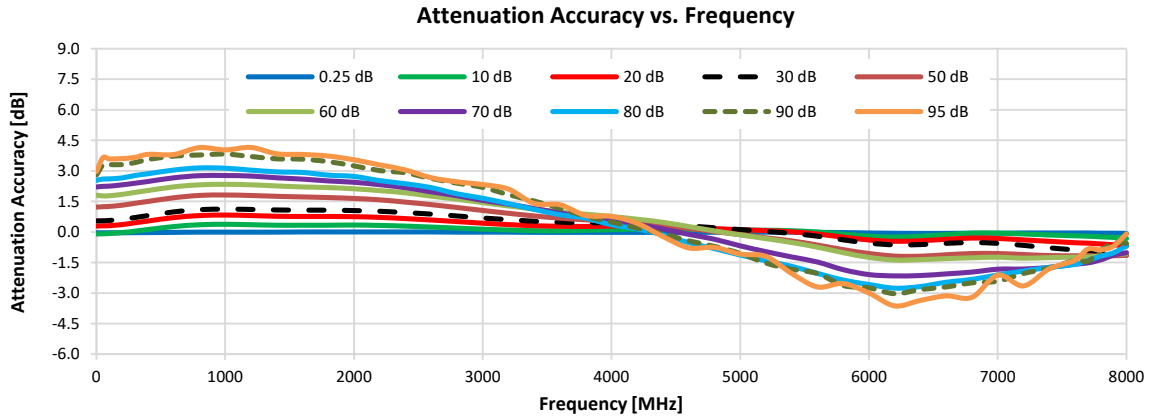


Programmable Attenuator

RC8DAT-8G-95PE

Typical Performance Graphs

Test Conditions: @ Temperature = +50°C.



Programmable Attenuator

RC8DAT-8G-95PE

Typical Performance Graphs

Test Conditions: @ Temperature = +50°C.

