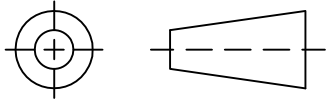


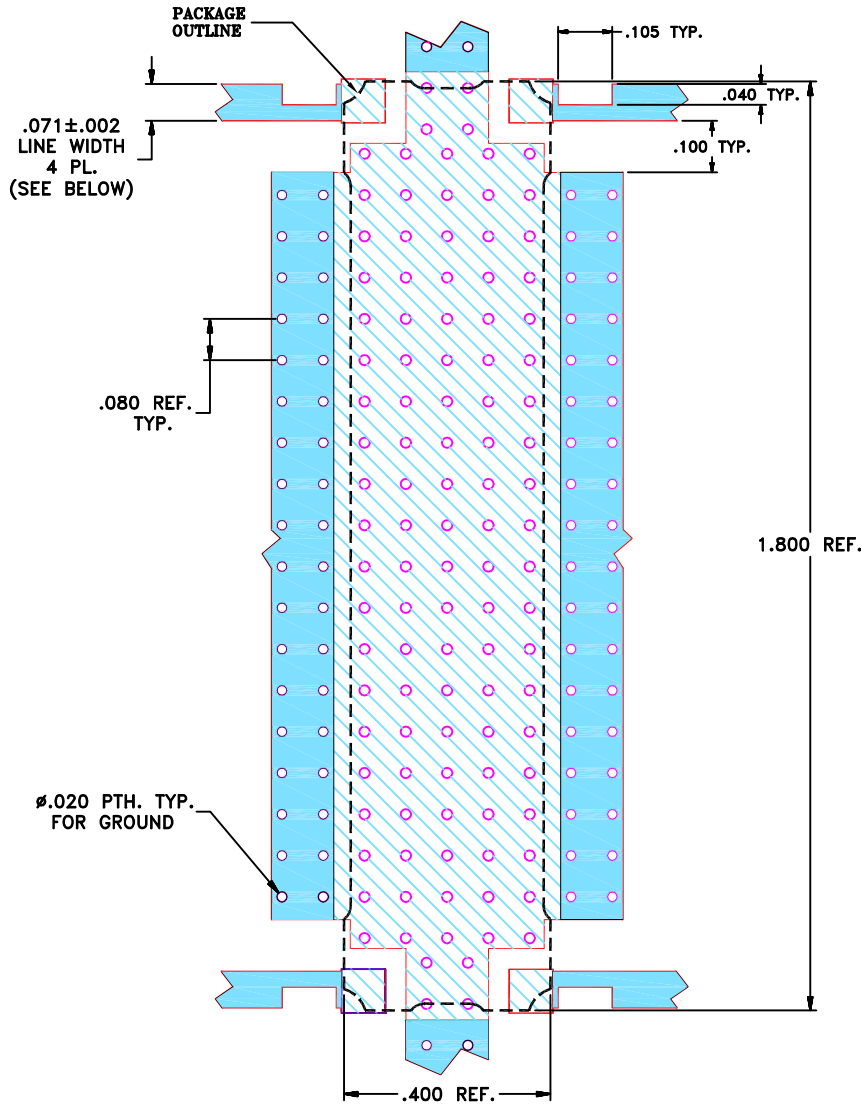
THIRD ANGLE PROJECTION



REVISIONS

REV	ECN No.	DESCRIPTION	DATE	DR	AUTH
OR	M155012	NEW RELEASE (FROM RAVON)	09/16	GF	YB
A	M163158	ADD TRACE CUTOUTS	07/17	HH	YB
A	R92310	ADD TRACE CUTOUTS	07/17	HH	YB

**SUGGESTED MOUNTING CONFIGURATION
FOR PQ2181 CASE STYLE 08DC08 PIN CONNECTION, 50 OHM**



NOTES:

- TRACE WIDTH IS SHOWN FOR ROGERS R04003C WITH DIELECTRIC THICKNESS. $.032 \pm .003$ ". COPPER: 1 OZ. EACH SIDE. FOR OTHER MATERIALS TRACE WIDTH MAY NEED TO BE MODIFIED.
- BOTTOM SIDE OF THE PCB IS CONTINUOUS GROUND PLANE.
- CUTOUTS IN RF LINES ARE REQUIRED TO ACHIEVE SPECIFIED ISOLATION.

- DENOTES PCB COPPER LAYOUT WITH SMOBC (SOLDER MASK OVER BARE COPPER)
- DENOTES COPPER LAND PATTERN FREE OF SOLDERMASK

UNLESS OTHERWISE SPECIFIED	INITIALS	DATE
DIMENSIONS ARE IN INCHES	GF (RAVON)	14 SEP 16
TOLERANCES ON:	HH (RAVON)	14 SEP 16
2 PL DECIMALS ±	YB (RAVON)	14 SEP 16
3 PL DECIMALS ± .005		
ANGLES ±		
FRACTIONS ±		



Mini-Circuits® 13 Neptune Avenue
Brooklyn NY 11235

**PL, 08DC08, PQ2181
TB-884+**

SIZE A	CODE IDENT 15542	DRAWING NO: 98-PL-480	REV: A
FILE: 98PL480(A)	SCALE: 2.5:1	SHEET: 1 OF 1	

Mini-Circuits®
THIS DOCUMENT AND ITS CONTENTS ARE THE PROPERTY OF MINI-CIRCUITS. EXCEPT FOR USE EXPRESSLY GRANTED, IN WRITING, TO ITS VENDORS, VENDEE AND THE UNITED STATES GOVERNMENT, MINI-CIRCUITS RESERVES ALL PROPRIETARY DESIGN, USE, MANUFACTURING AND REPRODUCTION RIGHTS THERETO. THESE CONTENTS SHALL NOT BE USED, DUPLICATED OR DISCLOSED TO ANY OUTSIDE PARTY, IN WHOLE OR IN PART, WITHOUT WRITTEN PERMISSION OF MINI-CIRCUITS.