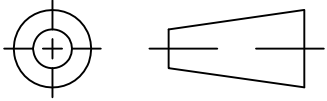


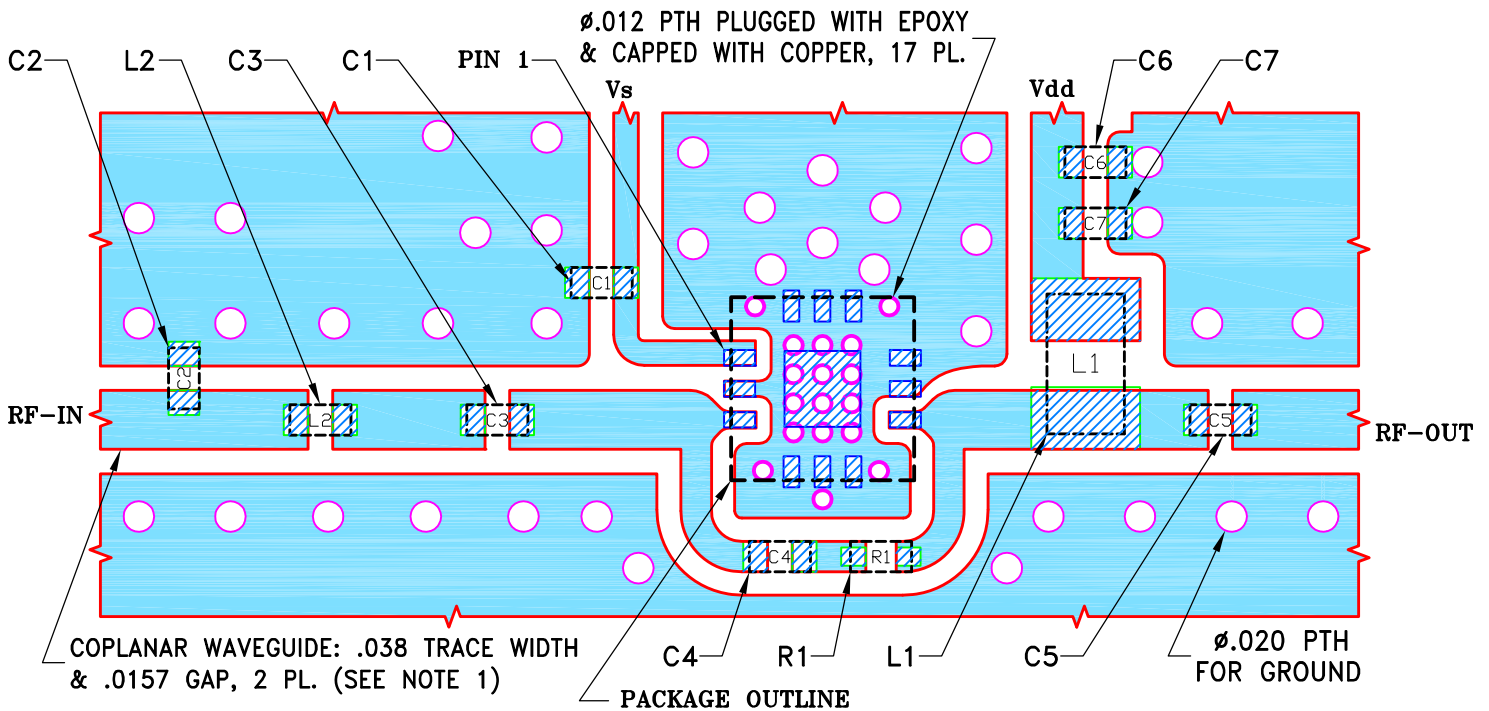
THIRD ANGLE PROJECTION



REVISIONS

REV	ECN No.	DESCRIPTION	DATE	DR	AUTH
OR	M171588	NEW RELEASE	12/20/18	ITG	GH

SUGGESTED MOUNTING CONFIGURATION FOR
DQ1225 CASE STYLE, "12AM05" PIN CODE



COMPONENT	SIZE
C1...C7;L2;R1	0402
L1	0805

NOTES:

- TRACE WIDTH & GAP PARAMETERS ARE SHOWN FOR ROGERS R04350B WITH DIELECTRIC THICKNESS .020"±.0015"; COPPER: 1/2 OZ. EACH SIDE. FOR OTHER MATERIALS TRACE WIDTH AND GAP MAY NEED TO BE MODIFIED.
- CHIP COMPONENT FOOTPRINTS SHOWN FOR REFERENCE. FOR COMPONENT VALUES REFER TO TB-TSS-23LN+ OR TB-TSS-23HLN+.
- BOTTOM SIDE OF THE PCB IS CONTINUOUS GROUND PLANE.

- DENOTES PCB COPPER LAYOUT WITH SMOBC (SOLDER MASK OVER BARE COPPER)
- DENOTES COPPER LAND PATTERN FREE OF SOLDER MASK

UNLESS OTHERWISE SPECIFIED DIMENSIONS ARE IN INCHES TOLERANCES ON: 2 PL DECIMALS ± 3 PL DECIMALS ± .005 ANGLES ± FRACTIONS ±	INITIALS		DATE
	DRAWN	ITG	12/19/18
	CHECKED	GF	12/20/18
	APPROVED	GH	12/20/18

Mini-Circuits® 13 Neptune Avenue
Brooklyn NY 11235

PL, 12AM05, DQ1225, TB-TSS-23LN+/23HLN+

SIZE	CODE IDENT	DRAWING NO:	REV:
A	15542	98-PL-619	OR
FILE:	98PL619	SCALE:	8:1
		SHEET:	1 OF 1

Mini-Circuits®
THIS DOCUMENT AND ITS CONTENTS ARE THE PROPERTY OF MINI-CIRCUITS. EXCEPT FOR USE EXPRESSLY GRANTED, IN WRITING, TO ITS VENDORS, VENDEE AND THE UNITED STATES GOVERNMENT, MINI-CIRCUITS RESERVES ALL PROPRIETARY DESIGN, USE, MANUFACTURING AND REPRODUCTION RIGHTS THERETO. THESE CONTENTS SHALL NOT BE USED, DUPLICATED OR DISCLOSED TO ANY OUTSIDE PARTY, IN WHOLE OR IN PART, WITHOUT WRITTEN PERMISSION OF MINI-CIRCUITS.