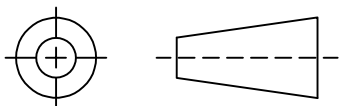


THIRD ANGLE PROJECTION

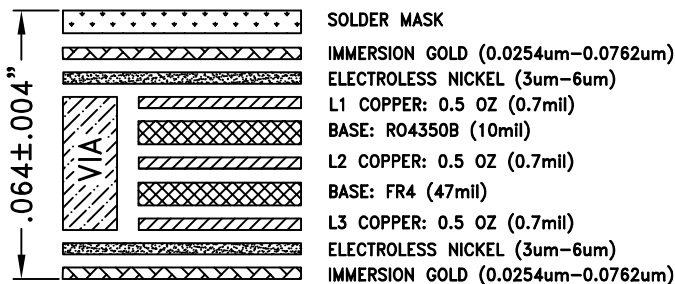


REVISIONS

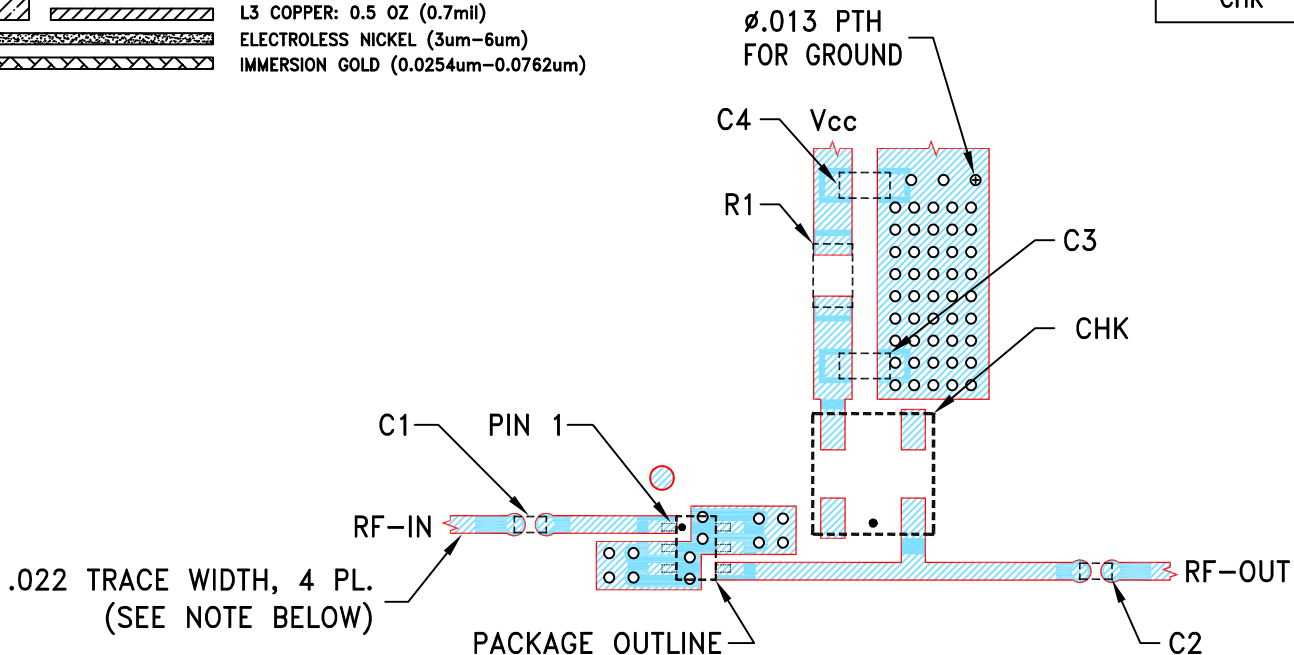
REV	ECN No.	DESCRIPTION	DATE	DR	AUTH
OR	ECO-019913	NEW RELEASE	11/14/23	ITG	IL

SUGGESTED MOUNTING CONFIGURATION FOR CA1389 CASE STYLE

3 LAYER STACK-UP DETAIL



COMPONENT	SIZE
C1,C2	0402
C3,C4	0603
R1	0805
CHK	.150X.150



NOTES:

1. PCB IS MULTILAYER PCB, SEE STACK-UP DIAGRAM.
2. TRACE WIDTH IS SHOWN FOR ROGERS RO4350B WITH DIELECTRIC THICKNESS .010".
COPPER: 1/2 OZ. EACH LAYER. FOR OTHER MATERIALS TRACE WIDTH MAY NEED TO BE MODIFIED.
3. CHIP COMPONENT FOOT PRINTS SHOWN FOR REFERENCE, FOR COMPONENT VALUES REFER TO TB-PSA2-6C+.
4. LAYERS 2 & 3 OF PCB ARE CONTINUOUS GROUND PLANE.

- DENOTES PCB COPPER LAYOUT WITH SMOBC (SOLDER MASK OVER BARE COPPER).
- DENOTES COPPER LAND PATTERN FREE OF SOLDER MASK.

UNLESS OTHERWISE SPECIFIED	INITIALS	DATE
DIMENSIONS ARE IN INCHES	ITG	11/14/23
TOLERANCES ON:	GF	11/14/23
2 PL DECIMALS ±	IL	11/14/23
3 PL DECIMALS ± .005		
ANGLES ±		
FRACTIONS ±		

Mini-Circuits® 13 Neptune Avenue Brooklyn NY 11235

PL, CA1389, TB-PSA2-6C+

Mini-Circuits®
 THIS DOCUMENT AND ITS CONTENTS ARE THE PROPERTY OF MINI-CIRCUITS. EXCEPT FOR USE EXPRESSLY GRANTED, IN WRITING, TO ITS VENDORS, VENDEE AND THE UNITED STATES GOVERNMENT, MINI-CIRCUITS RESERVES ALL PROPRIETARY DESIGN, USE, MANUFACTURING AND REPRODUCTION RIGHTS THERETO. THESE CONTENTS SHALL NOT BE USED, DUPLICATED OR DISCLOSED TO ANY OUTSIDE PARTY, IN WHOLE OR IN PART, WITHOUT WRITTEN PERMISSION OF MINI-CIRCUITS.

SIZE	CODE IDENT	DRAWING NO:	REV:
A	15542	98-PL-770	OR
FILE:	98PL770	SCALE:	SHEET:
		4:1	1 OF 1