



COAXIAL

Termination

ANNEF-50E+

50Ω DC to 65 GHz 1.85mm-Female

THE BIG DEAL

- Ultra-Wideband, DC to 65 GHz
- Excellent Return Loss, 23 dB typ.
- Input Power Handling up to 1W
- Mates with 2.4mm connector types



Generic photo used for illustration purposes only

Model No.	ANNEF-50E+
Case Style	LL2592-2
Connectors	1.85 mm-Female

+RoHS Compliant

The +Suffix identifies RoHS Compliance. See our website for methodologies and qualifications

APPLICATIONS

- Cellular communications
- Satellite communications
- Test set-up
- Defense & radar

PRODUCT OVERVIEW

Mini-Circuits' ANNEF-50E+ is an ultra-wideband 50Ω termination capable of absorbing signals up to 1W from DC to 65 GHz. It provides excellent return loss across its entire operating frequency range, effectively dissipating signal power with minimal reflections. This model has a 1.85mm-female connector, allowing connections with 2.4mm type connectors. The unit features rugged construction for a long life of use and comes in a stainless steel case and beryllium copper center conductor measuring only 0.65" (l) x 0.31" (dia.).

KEY FEATURES

Features	Advantages
Ultra-Wideband, DC to 65 GHz	Extremely wide frequency range provides application flexibility and makes this model ideal for broadband and multi-band use.
Good Return Loss: 23 dB typ.	Good return loss minimizes signal reflections across multiple-decade frequency range.
1.85mm-Female Connector mates with 2.4mm connector	Provides flexible connection options, avoiding the need for extra adapters.
Power Handling up to 1W	ANNEF-50E+ meets a wide range of system power requirements in a small device size.
Wide Operating Temperature Range, -55 to +100 °C	Withstands tough operating conditions and is suitable for use near high power componentry where heat rise is common.

REV. A
ECO-016342
ANNEF-50E+
MCL NY
230106





COAXIAL

Termination

ANNEF-50E+

50Ω DC to 65 GHz 1.85mm-Female

ELECTRICAL SPECIFICATIONS AT 25°C

Parameter	Condition (GHz)	Min.	Typ.	Max.	Unit
Frequency Range		DC	–	65	GHz
Impedance			50		Ohms
Return Loss	DC - 18	20.8	34	–	dB
	18 - 40	17.7	27	–	
	40 - 65	10.0	23	–	
Input Power ¹	DC - 65	–	–	1	W

1. Up to 25°C, derates linearly to 100mW at 100°C.

ABSOLUTE MAXIMUM RATINGS¹

Parameter	Ratings
Operating Temperature	-55 °C to +100 °C
Storage Temperature	-55 °C to +100 °C

1. Permanent damage may occur if any of these limits are exceeded.



COAXIAL

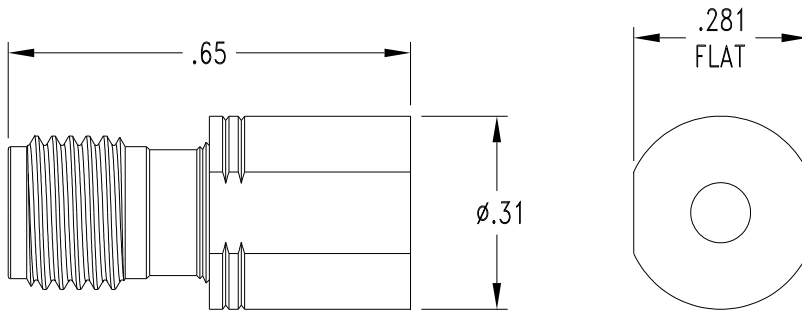
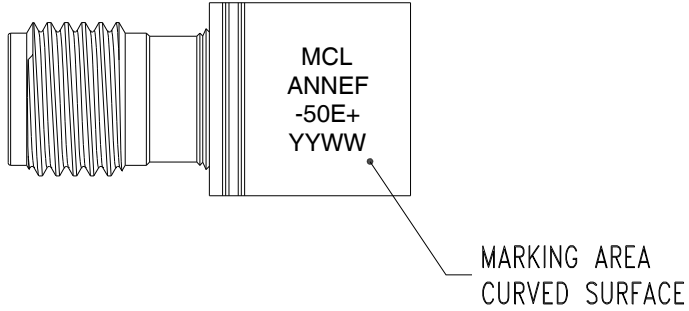
Termination

ANNEF-50E+

Mini-Circuits

50Ω DC to 65 GHz 1.85mm-Female

OUTLINE DRAWING



Weight: 4.6 grams (Max.)
Dimensions are in inches [mm]



COAXIAL

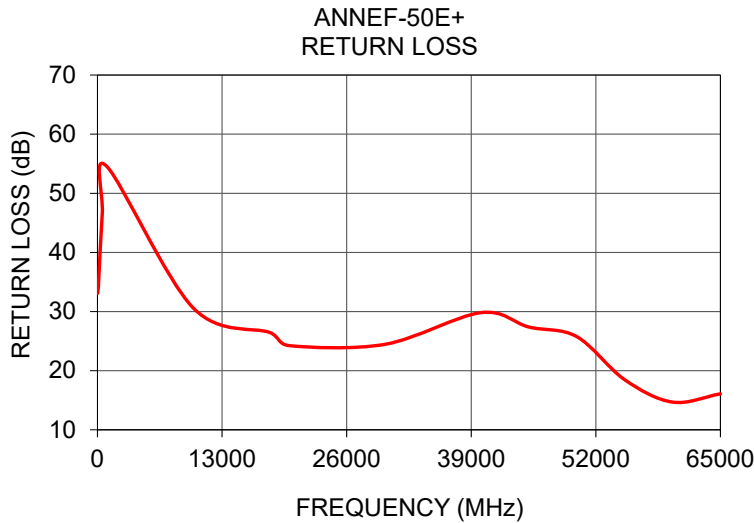
Termination

ANNEF-50E+

50Ω DC to 65 GHz 1.85mm-Female

TYPICAL PERFORMANCE DATA

Frequency (MHz)	Return Loss (dB)
10	33.05
100	34.31
500	46.58
1000	54.50
10000	30.59
18000	26.45
20000	24.24
30000	24.45
40000	29.82
45000	27.39
50000	25.77
55000	18.48
60000	14.69
65000	16.09



NOTES

- A. Performance and quality attributes and conditions not expressly stated in this specification document are intended to be excluded and do not form a part of this specification document.
- B. Electrical specifications and performance data contained in this specification document are based on Mini-Circuit's applicable established test performance criteria and measurement instructions.
- C. The parts covered by this specification document are subject to Mini-Circuits standard limited warranty and terms and conditions (collectively, "Standard Terms"); Purchasers of this part are entitled to the rights and benefits contained therein. For a full statement of the standard terms and the exclusive rights and remedies thereunder, please visit Mini-Circuits' website at www.minicircuits.com/terms/viewterm.html

