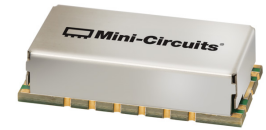


Surface Mount Bandpass Filter

BPF-F100+

50Ω 95 to 105 MHz



Generic photo used for illustration purposes only
CASE STYLE: HP1156

The Big Deal

- Narrow bandwidth
- High Rejection
- Good VSWR
- Shielded package

Product Overview

BPF-F100+ is a 50Ω bandpass filter in a shielded package fabricated using SMT technology. This bandpass filter covers from 95 to 105 MHz. This unit uses a miniature high Q capacitors and wire welded inductors for high reliability, It has repeatable performance across production lots and consistent performance across temperature.

Key Features

Feature	Advantages
Narrow bandwidth filter	Narrow bandwidth with fast roll-off, this will attenuate frequencies closer to the passband with good rejection value of > 40 dB which increases selectivity on the adjacent channel
Good rejection	This enables the filter attenuate spurious signals and reject harmonics for broad frequency band.
Shielded package	The small surface mount package enables the BPF-F100+ to used in compact design

Notes

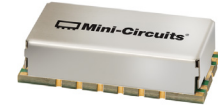
- A. Performance and quality attributes and conditions not expressly stated in this specification document are intended to be excluded and do not form a part of this specification document.
B. Electrical specifications and performance data contained in this specification document are based on Mini-Circuit's applicable established test performance criteria and measurement instructions.
C. The parts covered by this specification document are subject to Mini-Circuits standard limited warranty and terms and conditions (collectively, "Standard Terms"); Purchasers of this part are entitled to the rights and benefits contained therein. For a full statement of the Standard Terms and the exclusive rights and remedies thereunder, please visit Mini-Circuits' website at www.minicircuits.com/MCLStore/terms.jsp



Surface Mount Bandpass Filter

BPF-F100+

50Ω 95 to 105 MHz



Generic photo used for illustration purposes only
CASE STYLE: HP1156

Features

- Narrow bandwidth
- Sharper cut-off
- Shielded package

Applications

- Radio test equipment
- Receiver \ Transmitter
- Harmonic rejection

Electrical Specifications at 25°C

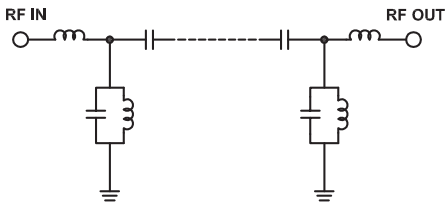
Parameter	F#	Frequency (MHz)	Min.	Typ.	Max.	Unit
Pass Band	Center Frequency	—	—	100	—	MHz
	Insertion Loss	F1-F2	95-105	5	6	dB
	VSWR	F1-F2	95-105	—	1.58	1.92
Stop Band, Lower	Insertion Loss	DC-F3	DC-85	40	45	dB
	VSWR	DC-F3	DC-85	—	20	—
Stop Band, Upper	Insertion Loss	F4-F5	120-900	40	44	dB
	VSWR	F4-F5	120-900	—	20	—

Maximum Ratings

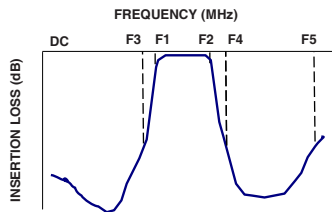
Operating Temperature	-40°C to 85°C
Storage Temperature	-55°C to 100°C
RF Power Input	1 W

Permanent damage may occur if any of these limits are exceeded.

Functional Schematic



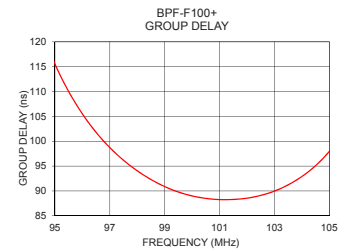
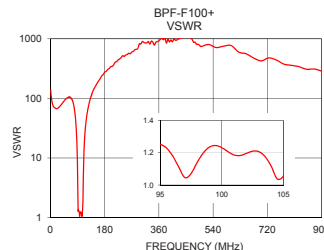
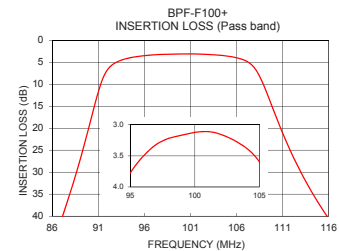
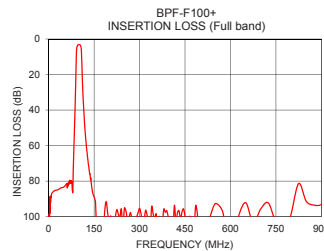
Typical Frequency Response



Typical Performance Data at 25°C

Frequency (MHz)	Insertion Loss (dB)	VSWR (:1)	Frequency (MHz)	Group Delay (nsec)
1.0	104.96	138.75	95.0	115.55
50.0	83.35	96.51	95.5	110.00
85.0	52.26	35.19	96.0	105.51
88.5	30.98	14.40	96.5	101.78
89.5	23.60	9.11	97.0	98.71
90.0	19.64	6.69	97.5	96.16
92.0	6.69	1.26	98.0	94.05
95.0	3.78	1.25	98.5	92.29
100.0	3.12	1.23	99.0	90.87
105.0	3.60	1.06	99.5	89.78
108.0	6.46	1.98	100.0	88.99
110.5	18.56	9.15	100.5	88.50
111.0	21.13	11.14	101.0	88.26
112.0	25.88	15.20	101.5	88.29
113.0	30.12	19.30	102.0	88.54
116.0	40.59	31.70	102.5	89.10
120.0	51.10	48.50	103.0	89.96
300.0	95.33	817.79	103.5	91.23
500.0	103.03	744.47	104.0	92.91
900.0	93.09	286.61	105.0	97.97

+RoHS Compliant
The +Suffix identifies RoHS Compliance. See our web site for RoHS Compliance methodologies and qualifications



Notes

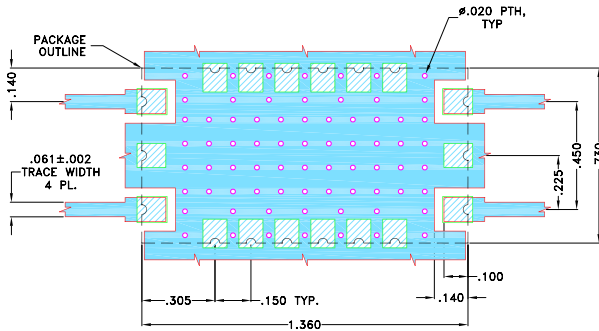
- Performance and quality attributes and conditions not expressly stated in this specification document are intended to be excluded and do not form a part of this specification document.
- Electrical specifications and performance data contained in this specification document are based on Mini-Circuit's applicable established test performance criteria and measurement instructions.
- The parts covered by this specification document are subject to Mini-Circuits standard limited warranty and terms and conditions (collectively, "Standard Terms"); Purchasers of this part are entitled to the rights and benefits contained therein. For a full statement of the Standard Terms and the exclusive rights and remedies thereunder, please visit Mini-Circuits' website at www.minicircuits.com/MCLStore/terms.jsp



Pad Connections

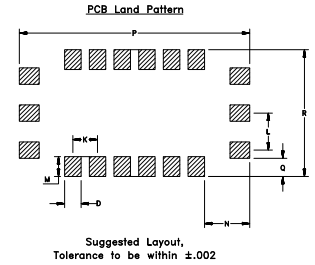
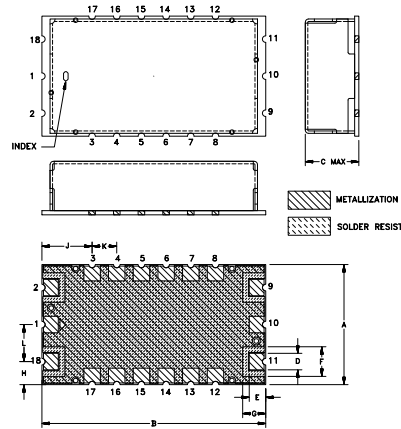
INPUT	18
OUTPUT	9
GROUND	1,3,4,5,6,7,8,10,12,13,14,15,16,17
NO CONNECTION	2,11

Demo Board MCL P/N: TB-695+ Suggested PCB Layout (PL-418)



- NOTES:
- TRACE WIDTH IS SHOWN FOR OAK-602, WITH DIELECTRIC THICKNESS $.022 \pm .0015"$. COPPER: 1/2 Oz. EACH SIDE. FOR OTHER MATERIALS TRACE WIDTH MAY NEED TO BE MODIFIED.
 - BOTTOM SIDE OF THE PCB IS CONTINUOUS GROUND PLANE.
- DENOTES PCB COPPER LAYOUT WITH SMOBC (SOLDER MASK OVER BARE COPPER)
 DENOTES COPPER LAND PATTERN FREE OF SOLDERMASK

Outline Drawing



Outline Dimensions (inch)

A	B	C	D	E	F	G	H	J
.730	1.360	.350	.100	.100	.180	.140	.140	.305
18.54	34.54	8.89	2.54	2.54	4.57	3.56	3.56	7.75
K	L	M	N	P	Q	R	Wt.	
.150	.225	.120	.275	1.400	.110	.770	grams	
3.81	5.72	3.05	6.99	35.56	2.79	19.56	6.0	

Note: Please refer to case style drawing for details

Notes

- Performance and quality attributes and conditions not expressly stated in this specification document are intended to be excluded and do not form a part of this specification document.
- Electrical specifications and performance data contained in this specification document are based on Mini-Circuit's applicable established test performance criteria and measurement instructions.
- The parts covered by this specification document are subject to Mini-Circuits standard limited warranty and terms and conditions (collectively, "Standard Terms"); Purchasers of this part are entitled to the rights and benefits contained therein. For a full statement of the Standard Terms and the exclusive rights and remedies thereunder, please visit Mini-Circuits' website at www.minicircuits.com/MCLStore/terms.jsp