

Plug-in

Diplexer

DPLC-6585A0M+

75Ω 5 to 1220 MHz
(5-65, 85-1220 MHz)



Generic photo used for illustration purposes only
CASE STYLE: QC2228

The Big Deal

- Plug-in design
- Field replaceable
- Low insertion loss
- Excellent return loss, 24 dB typ.
- High cross over isolation
- Low group delay variation in passband
- DOCSIS 3.1 standard

Product Overview

DPLC-6585A0M+ is a high performance field replaceable plug-in diplexer with the lowpass port at 5-65 MHz and highpass port at 85-1220 MHz. Excellent return loss combined with high out of channel rejection makes it an ideal part in cable TV and multiband radio systems

Key Features

Feature	Advantages
Low passband insertion loss	Ensures low signal loss through both the channels.
Excellent Stopband rejection	Co-channel rejection of 50dB typical ensures unwanted spurious are eliminated.
Excellent return loss at 5-65 and 85-1220 MHz	This makes signal transmission with very less reflection and well-matched with the adjacent component used in the system.

Notes

- A. Performance and quality attributes and conditions not expressly stated in this specification document are intended to be excluded and do not form a part of this specification document.
B. Electrical specifications and performance data contained in this specification document are based on Mini-Circuit's applicable established test performance criteria and measurement instructions.
C. The parts covered by this specification document are subject to Mini-Circuits standard limited warranty and terms and conditions (collectively, "Standard Terms"); Purchasers of this part are entitled to the rights and benefits contained therein. For a full statement of the Standard Terms and the exclusive rights and remedies thereunder, please visit Mini-Circuits' website at www.minicircuits.com/MCLStore/terms.jsp



Plug-in Diplexer

75Ω 5 to 1220 MHz (5-65, 85-1220 MHz)

DPLC-6585A0M+



Generic photo used for illustration purposes only
CASE STYLE: QC2228

+RoHS Compliant

The +Suffix identifies RoHS Compliance. See our web site for RoHS Compliance methodologies and qualifications

Maximum Ratings

Operating Temperature -40° to 85°C

Storage Temperature -55°C to 100°C

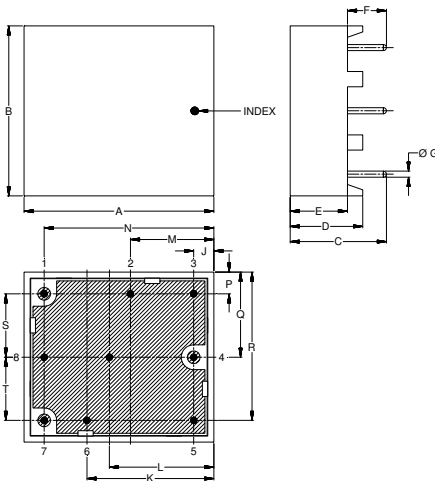
RF Power Input 30 dBm Max.

Permanent damage may occur if any of these limits are exceeded. These ratings are not intended for continuous normal operation

Pin Connections

HIGH PASS PORT	1
LOW PASS PORT	7
COMMON PORT	4
GROUND	2,3,5,6,8,9

Outline Drawing



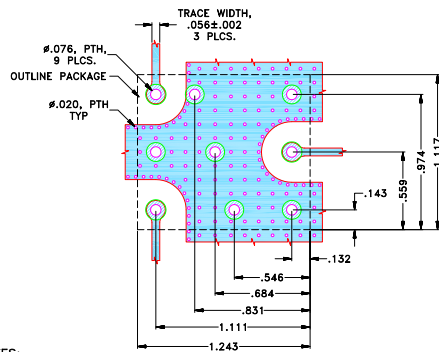
Outline Dimensions (inch/mm)

A	B	C	D	E	F	G	H	J	K
1.243	1.117	.630	.475	.375	.255	.040	--	.132	.831
31.56	28.36	16.00	12.07	9.53	6.48	1.02	--	3.35	21.10
L	M	N	P	Q	R	S	T	Wt.	
.684	.546	1.111	.143	.559	.974	.417	.415	grams	
17.37	13.87	28.22	3.63	14.21	24.74	10.58	10.53	7	

Note: Please refer to case style drawing for details

Demo Board MCL P/N: TB-929+
Suggested PCB Layout (PL-495)

SUGGESTED MOUNTING CONFIGURATION FOR
QC2228 CASE STYLE



NOTES:

- TRACE WIDTH IS SHOWN FOR IT180, WITH DIELECTRIC THICKNESS .059±.005". COPPER: 1/2 Oz EACH SIDE. FOR OTHER MATERIALS TRACE WIDTH MAY NEED TO BE MODIFIED.
- BOTTOM SIDE OF THE PCB IS CONTINUOUS GROUND PLANE.

- DENOTES PCB COPPER LAYOUT WITH SMOBC (SOLDER MASK OVER BARE COPPER)
- DENOTES COPPER LAND PATTERN FREE OF SOLDERMASK

Notes

- Performance and quality attributes and conditions not expressly stated in this specification document are intended to be excluded and do not form a part of this specification document.
- Electrical specifications and performance data contained in this specification document are based on Mini-Circuits' applicable established test performance criteria and measurement instructions.
- The parts covered by this specification document are subject to Mini-Circuits standard limited warranty and terms and conditions (collectively, "Standard Terms"); Purchasers of this part are entitled to the rights and benefits contained therein. For a full statement of the Standard Terms and the exclusive rights and remedies thereunder, please visit Mini-Circuits' website at www.minicircuits.com/MCLStore/terms.jsp

Features

- Low insertion loss
- 75Ω Impedance
- Excellent return loss 24 dB typ.
- Low group delay variation
- High cross over isolation
- High rejection

Applications

- Cable TV systems (DOCSIS 3.1 standard)
- Multiband radio systems



CAUTION NOTE: Not designed for reflow process.

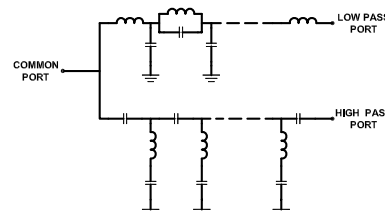
Electrical Specifications at 25°C

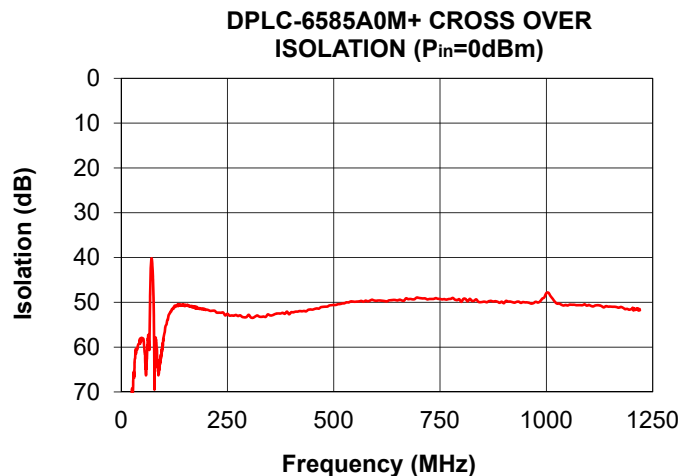
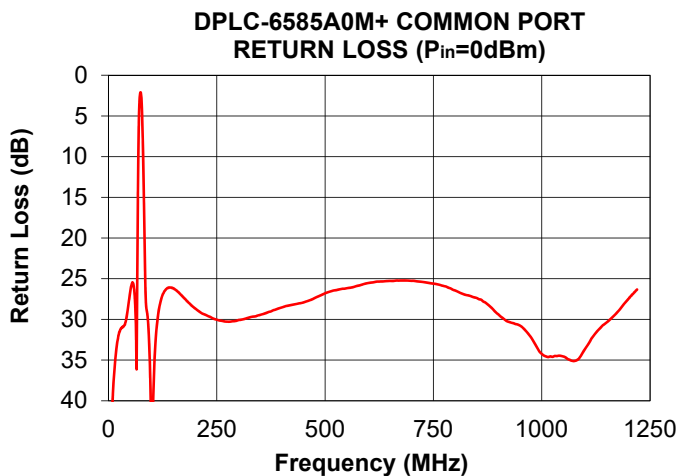
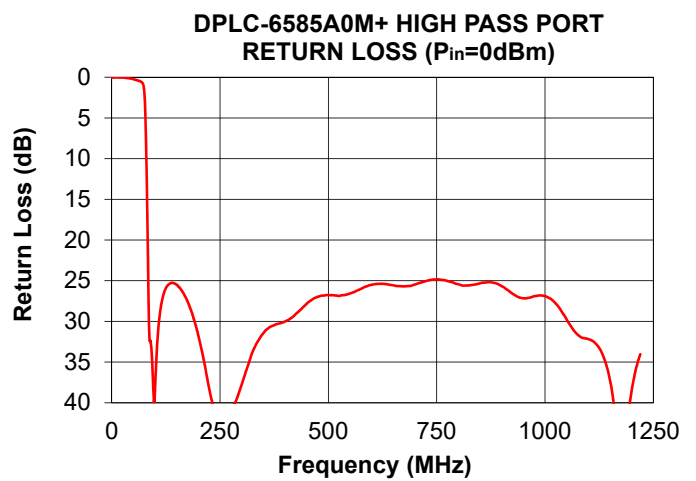
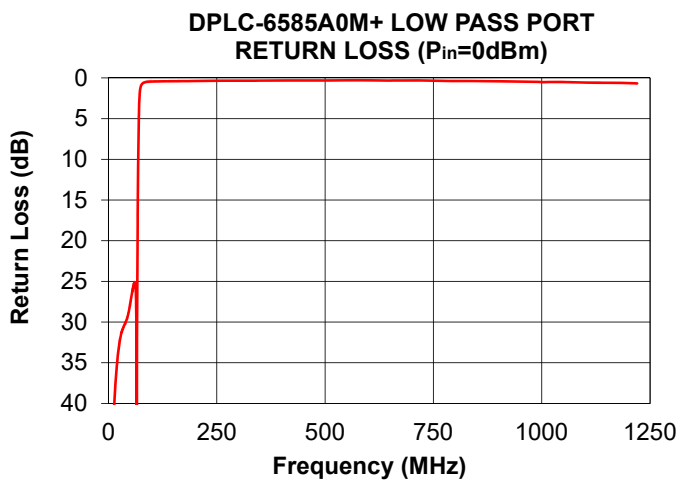
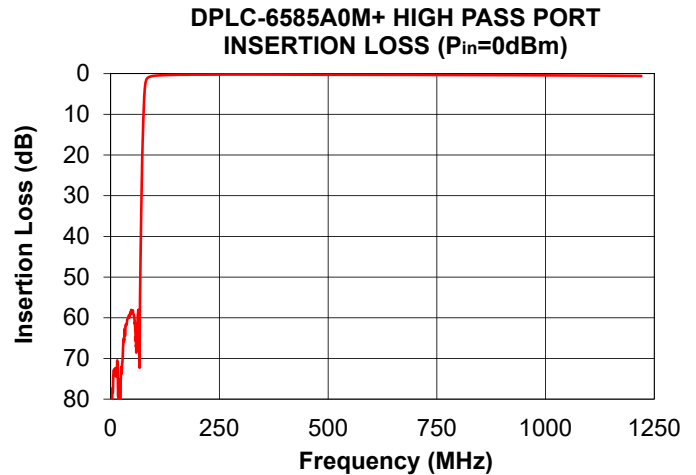
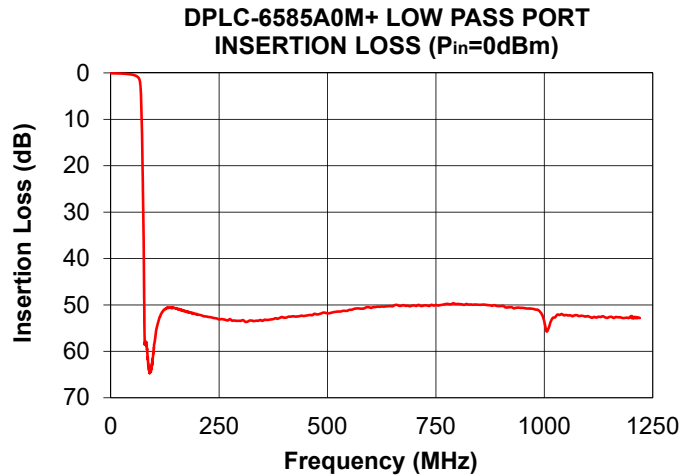
Parameter	Port	Frequency (MHz)	Min.	Typ.	Max.	Unit	
Pass Band	Insertion Loss	Low Pass	5-65	-	1.0	1.5	dB
		High Pass	85-1220	-	1.0	1.5	
	Return Loss	Low Pass	5-65	20	24	-	dB
		High Pass	85-1220	20	24	-	
		Common	5-65	20	24	-	
			85-1220	20	24	-	
Stop Band Isolation	Low Pass	85-1220	43	50	-	dB	
	High Pass	5-65	50	55	-		
	Cross over	65-85	35	40	-		
Group Delay Variation	Low Pass	62-63.5	-	7	10	ns	
		63.5-65	-	10	13		
	High Pass	112-116	-	1	2		
		120-124	-	1	1.5		

Typical Performance Data at 25°C

FREQUENCY (MHz)	INSERTION LOSS (dB)			RETURN LOSS (dB)	
	Low Pass Port	High Pass Port	Common Port	Low Pass Port	High Pass Port
5.0	0.08	78.27	46.33	49.89	0.03
10.0	0.09	73.74	39.46	43.70	0.02
35.0	0.19	61.67	30.83	30.62	0.09
62.0	0.84	60.58	28.49	25.34	0.42
63.5	0.97	58.20	31.14	26.82	0.45
65.0	1.16	59.11	36.14	34.55	0.48
68.0	2.20	50.60	14.85	14.02	0.56
69.0	3.29	43.05	9.92	8.94	0.59
70.5	6.78	32.11	5.04	4.13	0.67
72.0	12.68	23.32	2.86	2.05	0.80
72.5	15.05	20.92	2.52	1.72	0.86
73.0	17.57	18.72	2.29	1.47	0.95
73.5	20.25	16.67	2.15	1.30	1.06
74.5	26.13	13.00	2.13	1.06	1.40
75.0	29.40	11.35	2.24	0.98	1.64
77.0	46.39	6.08	3.71	0.78	3.51
78.0	56.56	4.31	5.23	0.72	5.17
80.0	58.15	2.29	9.79	0.63	9.95
85.0	61.00	1.03	25.23	0.52	27.14
112.0	52.85	0.42	30.57	0.43	28.69
116.0	51.96	0.39	28.94	0.42	27.45
120.0	51.36	0.38	27.89	0.42	26.60
124.0	50.94	0.36	27.13	0.42	26.04
250.0	53.12	0.23	30.03	0.34	41.07
500.0	51.82	0.26	26.79	0.31	26.77
750.0	50.00	0.32	25.61	0.34	24.85
900.0	50.24	0.38	29.39	0.41	25.67
1000.0	53.60	0.42	34.24	0.51	26.88
1220.0	52.81	0.57	26.33	0.67	34.04

Functional Schematic





Notes

- A. Performance and quality attributes and conditions not expressly stated in this specification document are intended to be excluded and do not form a part of this specification document.
- B. Electrical specifications and performance data contained in this specification document are based on Mini-Circuit's applicable established test performance criteria and measurement instructions.
- C. The parts covered by this specification document are subject to Mini-Circuits standard limited warranty and terms and conditions (collectively, "Standard Terms"); Purchasers of this part are entitled to the rights and benefits contained therein. For a full statement of the Standard Terms and the exclusive rights and remedies thereunder, please visit Mini-Circuits' website at www.minicircuits.com/MCLStore/terms.jsp

