



COAXIAL

# Termination

## LOUIS-50

Mini-Circuits

50Ω DC to 2000 MHz DIN Male w/retaining sleeve

### FEATURES

- Wideband Coverage, DC to 2000 MHz
- Return Loss, 33 dB typ. up to 1000 MHz and 27 dB typ. 10000 to 2000 MHz



Generic photo used for illustration purposes only

Model No.	LOUIS-50
Case Style	LL987
Connectors	DIN Male w/retaining sleeve

### APPLICATIONS

- Cellular Communications
- Satellite Communications
- Test Setup

### ELECTRICAL SPECIFICATIONS (T<sub>AMB</sub> = 25°C)

Parameter	Frequency (MHz)	Min.	Typ.	Max.	Units
Frequency Range		DC		2000	MHz
Impedance			50		Ohms
Return Loss	DC - 500	28	—	—	dB
	DC - 1000	28	—	—	
	DC - 2000	21	—	—	
Power Rating <sup>1</sup>	DC - 2000	—	—	0.125	W

1. Up to 70°C, derate linearly to 80% at 85°C

### ABSOLUTE MAXIMUM RATINGS<sup>1</sup>

Parameter	Ratings
Operating temperature	-42°C to +85°C
Storage temperature	-55°C to +100°C

1. Permanent damage may occur if any of these limits are exceeded.





COAXIAL

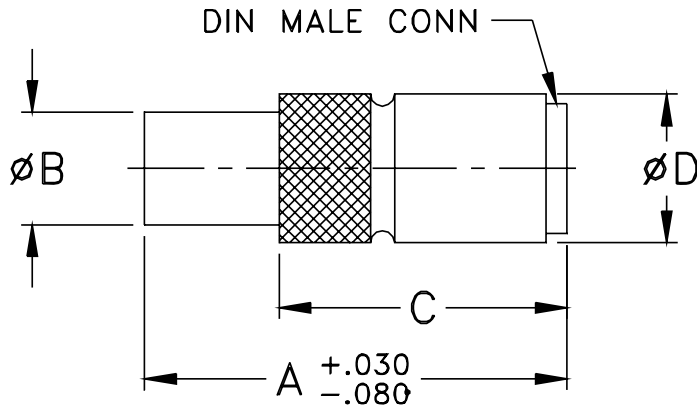
# Termination

LOUIS-50

Mini-Circuits

50Ω DC to 2000 MHz DIN Male w/retaining sleeve

## OUTLINE DRAWING



## OUTLINE DIMENSIONS (Inch/mm)

A	B	C	D	wt
0.94	0.25	0.64	0.33	grams
23.88	6.35	16.26	8.38	6.50



COAXIAL

# Termination

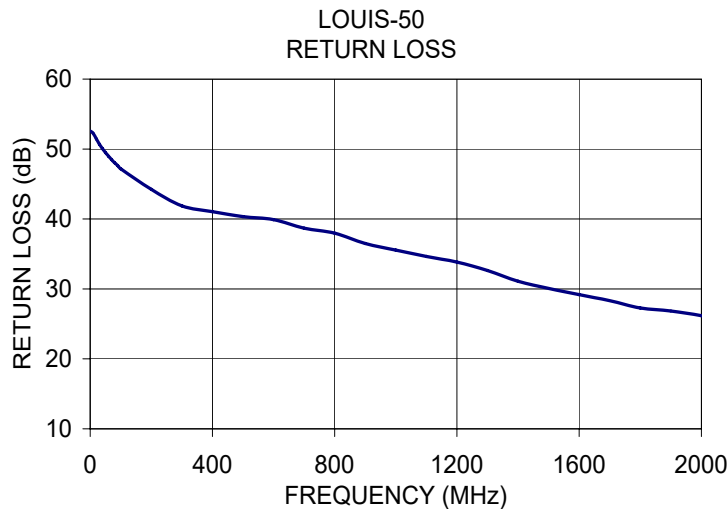
LOUIS-50

Mini-Circuits

50Ω DC to 2000 MHz DIN Male w/retaining sleeve

## TYPICAL PERFORMANCE DATA

Frequency (MHz)	Return Loss (dB)
1.00	52.55
20.00	51.45
40.00	50.07
70.00	48.50
100.00	47.17
300.00	41.88
500.00	40.34
700.00	38.69
1000.00	35.56
1200.00	33.84
1300.00	32.63
1500.00	30.08
1700.00	28.32
1900.00	26.84
2000.00	26.18



### NOTES

- Performance and quality attributes and conditions not expressly stated in this specification document are intended to be excluded and do not form a part of this specification document.
- Electrical specifications and performance data contained in this specification document are based on Mini-Circuit's applicable established test performance criteria and measurement instructions.
- The parts covered by this specification document are subject to Mini-Circuits standard limited warranty and terms and conditions (collectively, "Standard Terms"); Purchasers of this part are entitled to the rights and benefits contained therein. For a full statement of the standard. Terms and the exclusive rights and remedies thereunder, please visit Mini-Circuits' website at [www.minicircuits.com/MCLStore/terms.jsp](http://www.minicircuits.com/MCLStore/terms.jsp)

