

High Reliability Mixer

SYM-R252HW+

Level 17 (LO Power +17 dBm) 10 to 2500 MHz



Generic photo used for illustration purposes only

CASE STYLE: TTT881

+RoHS Compliant

The +Suffix identifies RoHS Compliance. See our web site for RoHS Compliance methodologies and qualifications

Available Tape and Reel at no extra cost

Reel Size	Devices/Reel
7"	10, 20, 50, 100, 200
13"	500

Maximum Ratings

Operating Temperature	-40°C to 85°C
Storage Temperature	-55°C to 100°C
RF Power	200mW
IF Current	40mA
Permanent damage may occur if any of these limits are exceeded.	

Pin Connections

LO	2
RF	1
IF	3
GROUND	4,5,6

Features

- wideband, 10 to 2500 MHz
- good L-R isolation, 40 dB typ.
- good L-I isolation, 40 dB typ.
- high IP3, 23 dBm typ.
- hermetically sealed ceramic quad

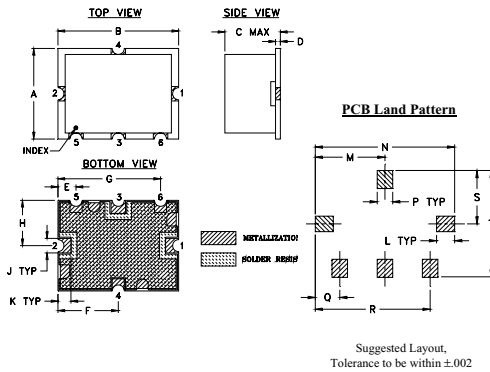
Applications

- CDMA
- GSM
- DCS
- PCN
- Base station

Electrical Specifications at 25°C

Parameter	Min.	Typ.	Max.	Unit
Frequency Range, RF	10	—	2500	MHz
Frequency Range, LO	10	—	2500	MHz
Frequency Range, IF	10	—	500	MHz
Conversion Loss	—	6.5	9.1	dB
LO to RF Isolation	24	40	—	dB
LO to IF Isolation	28	40	—	dB
IP3	—	23	—	dBm
RF Input Power at 1 dB Compression	—	+14	—	dBm

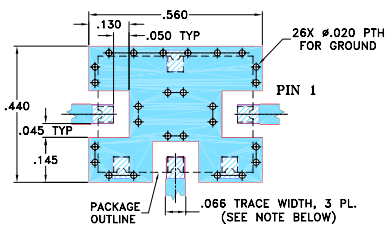
Outline Drawing



Outline Dimensions (inch/mm)

A	B	C	D	E	F	G	H	J	K
.38	.50	.23	.020	.075	.250	.425	.187	.050	.050
9.65	12.70	5.84	0.51	1.91	6.35	10.80	4.75	1.27	1.27
L	M	N	P	Q	R	S	T	wt.	
.070	.270	.540	.060	.095	.445	.208	.415	grams	
1.78	6.86	13.72	1.52	2.41	11.30	5.28	10.54	0.8	

Demo Board MCL P/N: TB-12 Suggested PCB Layout (PL-079)



NOTE:

1. TRACE WIDTH IS SHOWN FOR ROGERS RO4350B WITH DIELECTRIC THICKNESS .030" ± .002"; COPPER: 1/2 OZ. EACH SIDE. FOR OTHER MATERIALS TRACE WIDTH MAY NEED TO BE MODIFIED.
 2. THE USE OF SOLDER MASK OVER THE GROUND AREA UNDER THE UNIT AS SHOWN IS RECOMMENDED TO PREVENT POTENTIAL SHORTING. IF USER CHOOSES TO EXPOSE METAL UNDER THE ENTIRE UNIT GROUND PAD FOR IMPROVED GROUNDING, IT IS RECOMMENDED A SOLDER MASK DAM BE APPLIED AROUND EACH GROUND PAD TO ENSURE FILLET AND CONNECTION AT GROUND PADS.
 3. BOTTOM SIDE OF THE PCB IS CONTINUOUS GROUND PLANE.
- DENOTES PCB COPPER LAYOUT WITH SMOBC (SOLDER MASK OVER BARE COPPER). SEE NOTE 2.
 DENOTES COPPER LAND PATTERN FREE OF SOLDER MASK

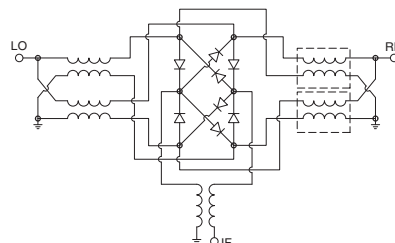
Notes

- A. Performance and quality attributes and conditions not expressly stated in this specification document are intended to be excluded and do not form a part of this specification document.
 B. Electrical specifications and performance data contained in this specification document are based on Mini-Circuit's applicable established test performance criteria and measurement instructions.
 C. The parts covered by this specification document are subject to Mini-Circuits standard limited warranty and terms and conditions (collectively, "Standard Terms"); Purchasers of this part are entitled to the rights and benefits contained therein. For a full statement of the Standard Terms and the exclusive rights and remedies thereunder, please visit Mini-Circuits' website at www.minicircuits.com/MCLStore/terms.jsp

Typical Performance Data

Frequency (MHz)		Conversion Loss (dB)	Isolation L-R (dB)	Isolation L-I (dB)	VSWR RF Port (:1)	VSWR LO Port (:1)
RF	LO	LO +17dBm	LO +17dBm	LO +17dBm	LO +17dBm	LO +17dBm
40.10	10.00	6.24	34.15	44.21	1.04	1.70
100.10	70.00	6.36	34.16	45.12	1.03	1.62
500.10	470.00	6.69	33.15	43.54	1.23	1.65
800.10	770.00	6.71	33.73	41.53	1.51	1.64
900.10	870.00	6.68	34.17	42.23	1.62	1.63
1000.10	970.00	6.66	35.58	41.39	1.68	1.60
1200.10	1170.00	6.50	38.88	41.48	1.80	1.58
1300.10	1270.00	6.41	41.19	44.24	1.81	1.59
1400.10	1370.00	6.33	44.46	44.18	1.77	1.62
1500.10	1470.00	6.29	44.97	42.19	1.72	1.65
1600.10	1570.00	6.30	47.33	41.51	1.64	1.65
1700.10	1670.00	6.37	51.03	42.00	1.60	1.66
1800.10	1770.00	6.50	57.24	41.32	1.65	1.67
1900.10	1870.00	6.75	51.76	40.12	1.69	1.65
2000.10	1970.00	7.07	45.66	38.89	1.80	1.63
2100.10	2070.00	7.32	41.25	38.08	1.91	1.60
2200.10	2170.00	7.50	38.05	38.05	1.91	1.56
2300.10	2270.00	7.69	36.33	38.24	1.90	1.52
2400.10	2370.00	7.75	35.35	38.66	1.90	1.50
2530.10	2500.00	7.52	34.20	40.40	1.72	1.50

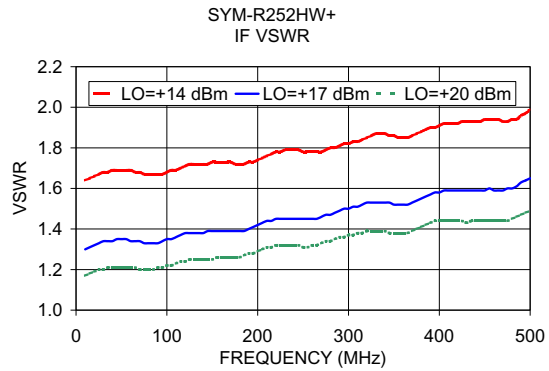
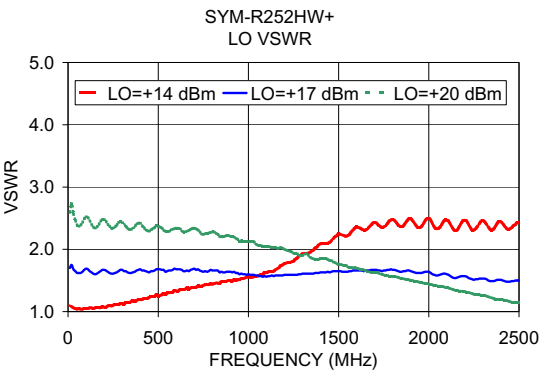
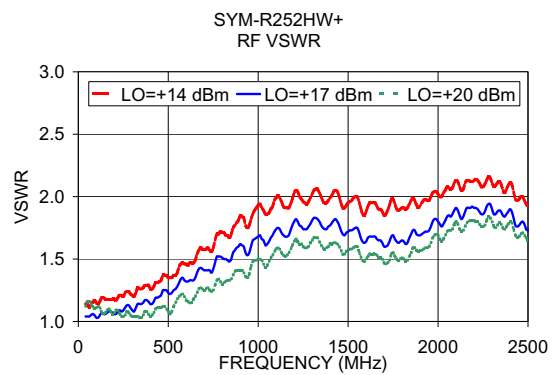
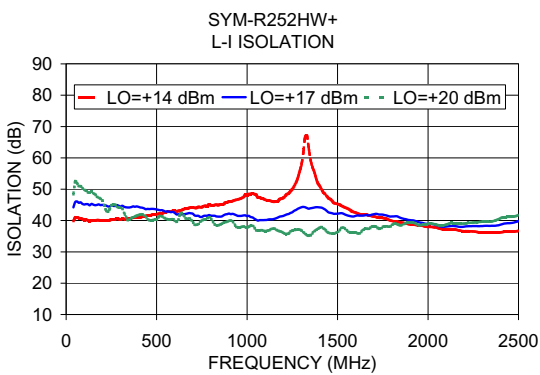
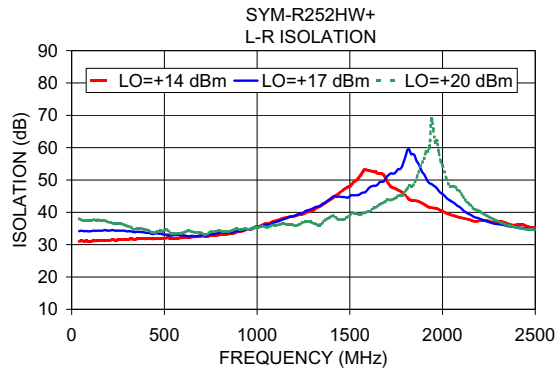
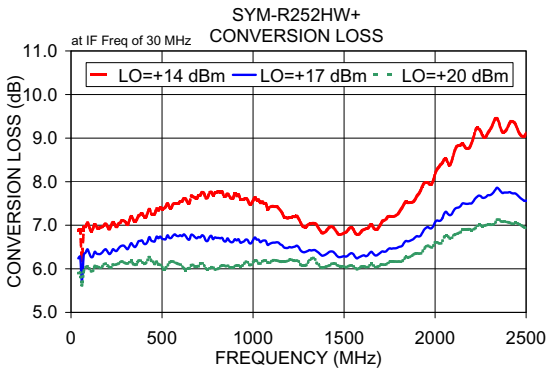
Electrical Schematic



Mini-Circuits®

www.minicircuits.com P.O. Box 350166, Brooklyn, NY 11235-0003 (718) 934-4500 sales@minicircuits.com

REV. A
M151107
SYM-R252HW+
ED14689/1
DJ/TD/CP/AM
200820
Page 1 of 2



Notes

- A. Performance and quality attributes and conditions not expressly stated in this specification document are intended to be excluded and do not form a part of this specification document.
- B. Electrical specifications and performance data contained in this specification document are based on Mini-Circuit's applicable established test performance criteria and measurement instructions.
- C. The parts covered by this specification document are subject to Mini-Circuits standard limited warranty and terms and conditions (collectively, "Standard Terms"); Purchasers of this part are entitled to the rights and benefits contained therein. For a full statement of the Standard Terms and the exclusive rights and remedies thereunder, please visit Mini-Circuits' website at www.minicircuits.com/MCLStore/terms.jsp

