



CERAMIC BALUN

RF Transformer

TCW1-2700+



50Ω 700 to 2700 MHz 1:1 Ratio

FEATURES

- Wideband, 700 to 2700 MHz
- Miniature size 0603 (1.6x0.8mm)
- LTCC construction
- Low cost
- Aqueous washable



Generic photo used for illustration purposes only

CASE STYLE: JC0603C

+RoHS Compliant

The +Suffix identifies RoHS Compliance.
See our website for methodologies and qualifications

APPLICATIONS

- WLAN
- A/D conversion
- WiFi
- Transmitters and receivers
- Cellular

ELECTRICAL SPECIFICATIONS AT 25°C

Parameter	Frequency (MHz)	Min.	Typ.	Max.	Unit
Impedance Ratio		1			
Frequency Range		700	—	2700	MHz
Avg. Insertion Loss ¹	700 - 2700	—	1.4	2.0	dB
Amplitude Unbalance	700 - 2700	—	1	2	dB
Phase Unbalance ²	700 - 2700	—	12	15	Degree

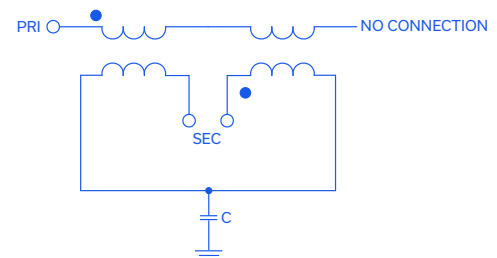
1. Reference demo board TB-912+.
2. Relative to 180°

MAXIMUM RATINGS

Parameter	Ratings
Operating Temperature	-55°C to 100°C
Storage Temperature	-55°C to 100°C
RF Power	0.5W

Permanent damage may occur if any of these limits are exceeded.

CONFIGURATION R



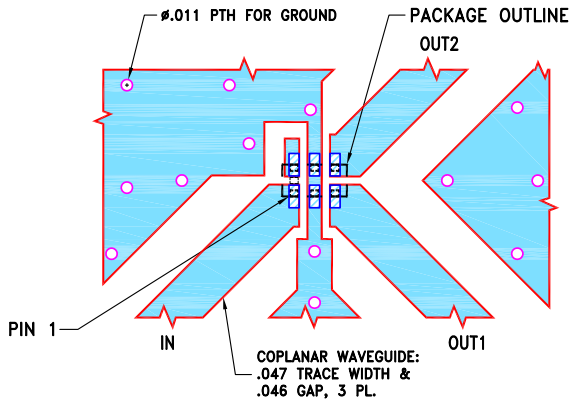


PAD CONNECTIONS

PRIMARY DOT	1
GND or DC feed + RF	2
SECONDARY DOT	3
SECONDARY	4
NO CONNECTION	6
NOT USED	5

PRODUCT MARKING: N/A

DEMO BOARD MCL P/N: TB-912+
SUGGESTED PCB LAYOUT (PL-574)

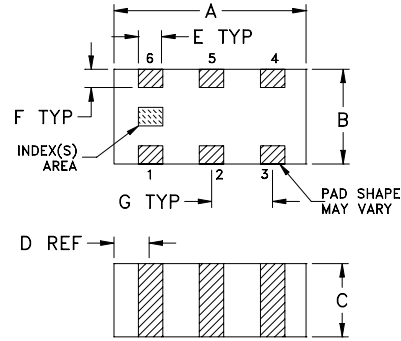


NOTES:

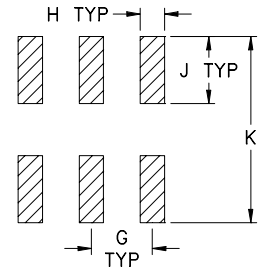
1. TRACE WIDTH & GAP PARAMETERS ARE SHOWN FOR ROGERS R04350B WITH DIELECTRIC THICKNESS .020±.0015. COPPER: 1/2 OZ. EACH SIDE. FOR OTHER MATERIALS TRACE WIDTH & GAP MAY NEED TO BE MODIFIED.
2. BOTTOM SIDE OF THE PCB IS CONTINUOUS GROUND PLANE.

- DENOTES PCB COPPER LAYOUT WITH SMOBC (SOLDER MASK OVER BARE COPPER).
- DENOTES COPPER LAND PATTERN FREE OF SOLDER MASK.

OUTLINE DRAWING



PCB Land Pattern



Suggested Layout,
Tolerance to be within ±.002

OUTLINE DIMENSIONS (Inches/mm)

A	B	C	D	E	F
.063	.031	.024	.012	.008	.006
1.60	0.79	0.61	0.30	0.20	0.15
G	H	J	K		wt
.020	.010	.022	.053		grams
0.51	0.25	0.56	1.35		0.005

TAPE & REEL INFORMATION: F114



CERAMIC BALUN

RF Transformer

TCW1-2700+

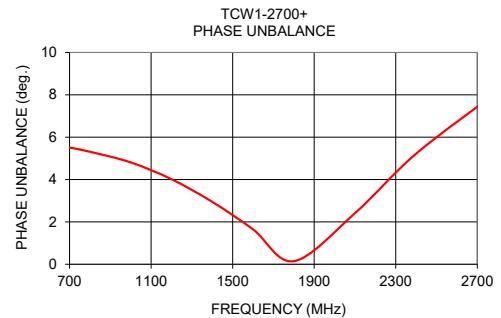
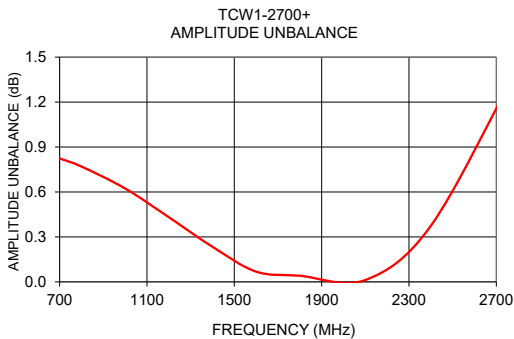
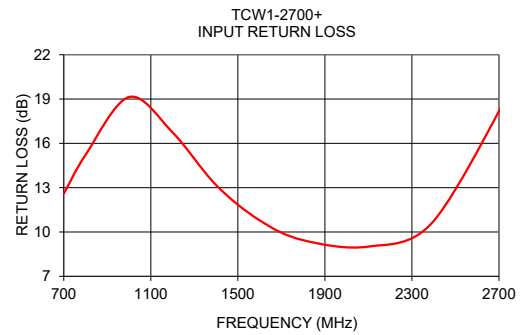
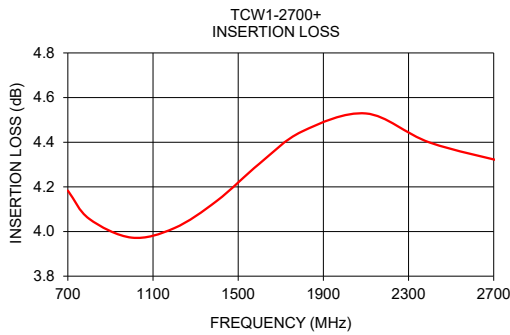


50Ω 700 to 2700 MHz 1:1 Ratio

TYPICAL PERFORMANCE DATA³

Frequency (MHz)	Insertion Loss (dB)	VSWR (:1)	Amplitude Unbalance (dB)	Phase Unbalance (deg)
700.0	4.18	12.59	0.82	5.51
800.0	4.06	15.22	0.77	5.31
1000.0	3.97	19.14	0.62	4.81
1200.0	4.02	16.74	0.43	4.02
1400.0	4.14	13.18	0.23	2.95
1600.0	4.30	10.79	0.07	1.65
1800.0	4.45	9.44	0.04	0.14
2100.0	4.53	9.01	0.01	2.41
2400.0	4.40	10.75	0.37	5.22

3. Measured with Agilent N5242A network analyzer using impedance conversion and port extension.



NOTES

- A. Performance and quality attributes and conditions not expressly stated in this specification document are intended to be excluded and do not form a part of this specification document.
- B. Electrical specifications and performance data contained in this specification document are based on Mini-Circuit's applicable established test performance criteria and measurement instructions.
- C. The parts covered by this specification document are subject to Mini-Circuits standard limited warranty and terms and conditions (collectively, "Standard Terms"); Purchasers of this part are entitled to the rights and benefits contained therein. For a full statement of the standard. Terms and the exclusive rights and remedies thereunder, please visit Mini-Circuits' website at www.minicircuits.com/terms/viewterm.html

