



FEATURES

- Lab quality
- Accuracy
- Precise preset torque
- Prevent over or under tightening
- Light weight, easy to use
- N-Type connectors 3/4" or 19.1mm across flats



Generic photo used for illustration purposes only

THE WRENCH KIT CONSISTS OF:

1. Torque wrench
2. Calibration certificate*
3. Foam padded cardboard instrument case

Case Style	MY3255
Calibration Service	CALTRQ-N34-8

COMPLIANCE

Performance standards are in compliance with ANSI/NCSS Z540 and ISO 10011

PRODUCT OVERVIEW

Mini-Circuits' Precise Break-over Torque Wrench TRQ-N34-8 allows for precise mating force and easy use in tight spaces. The head will break over to signal the user when preset torque is achieved. It will effectively prevent over/under tightening.

PRODUCT SPECIFICATIONS

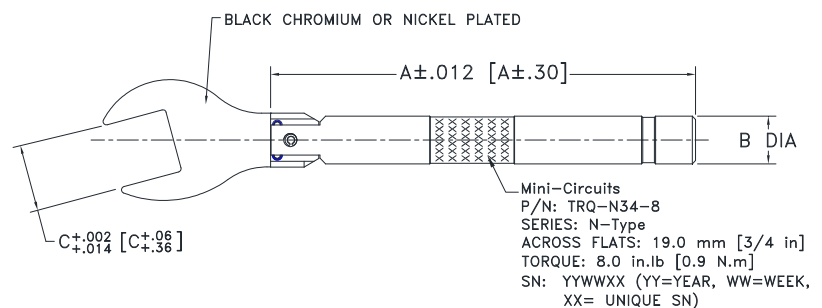
Wrench Torque	8±0.4 inch.lbs (0.9±0.045 NM)
Wrench Size	19.1mm (3/4 inches)
Wrench Head	Carbon Steel Black Chromium or Chrome Vanadium Steel Nickel Plated
Handle	Aluminum blue anodized
Length (Nominal)	7.09 ±.030 inches

*Recommended duration of calibration is one year. Calibration intervals set by national and international standards are either one year or 5000 cycles, whichever comes first. However, to ensure that the performance is in accordance to factory calibrated standards, actual need of calibration may vary based on use. Contact Sales AM for recalibration.

NOTES

- Performance and quality attributes and conditions not expressly stated in this specification document are intended to be excluded and do not form a part of this specification document.
- Electrical specifications and performance data contained in this specification document are based on Mini-Circuit's applicable established test performance criteria and measurement instructions.
- The parts covered by this specification document are subject to Mini-Circuits standard limited warranty and terms and conditions (collectively, "Standard Terms"); Purchasers of this part are entitled to the rights and benefits contained therein. For a full statement of the standard. Terms and the exclusive rights and remedies thereunder, please visit Mini-Circuits' website at www.minicircuits.com/MCLStore/terms.jsp

OUTLINE DRAWING



CASE #	A	B	C
MY3255	5.00 [127.05]	.559 [14.2]	.748 [19.0]

Dimensions are in inches [mm]. Tolerances: 3 Pl. ± .006 [0.150] Inch [mm]
Torque Wrench Weight: 95 grams
Torque Wrench + Box Weight: 175 grams

REV. C
ECO-020227
TRQ-N34-8
MCL NY
240108